



**Annual Report 2002**

**Julius Center for Health Sciences and Primary Care**

**UMC Utrecht**



## INTRODUCTION

The Julius Center for Health Sciences and Primary Care is one of the twelve departments of the University Medical Center Utrecht (UMC Utrecht). It carries out scientific research, provides education, and offers expertise and facilities in the area of clinical health sciences.

The Center aims at a leading and acquisitive position in the enlargement and dissemination of knowledge, especially in the field of health sciences. This is done by means of groundbreaking research in the area of four disease-related themes and by the provision of courses for (bio)medical students, researchers and clinicians.

Disciplines represented in the Center are general practice, (clinical) epidemiology, nursing science, public health (including medical technology assessment), and nutritional sciences.

In this annual report the reader will find information on delivered services, output and finances over 2002.

### Contact information:

Dr. M. Kluijtmans, Research and Education

Julius Center for Health Sciences and Primary Care

University Medical Center Utrecht

visitors: Heidelberglaan 100, 3584 CX Utrecht, the Netherlands

correspondence: HP.D.01.335, P.O. Box 85500, 3508 GA Utrecht, The Netherlands

URL: [www.juliuscenter.nl](http://www.juliuscenter.nl)

E-mail: [juliuscenter@azu.nl](mailto:juliuscenter@azu.nl) ; [m.kluijtmans@jc.azu.nl](mailto:m.kluijtmans@jc.azu.nl)



# CONTENTS

## ORGANIZATION

- Short history
- Organizational structure

## RESEARCH

- Research organization
- Research themes
- Research services and vascular imaging center

## EDUCATION

- Overview
- Biomedical sciences
- Medical doctor
- Nursing science
- General practice vocational training
- Graduate schools
- Advanced training in public health
- Advanced training in general practice

## PATIENT CARE

- Dietetics

## BUSINESS AND OPERATIONS

## PERSONNEL AND FINANCES

- Personnel, figures
- Personnel, listing
- Financial report

## RESEARCH PROJECTS (2002)

- Cardiovascular diseases
- Infectious diseases
- Oncology
- Mental health
- Miscellaneous
- Research Services
- Vascular Imaging Center

## PUBLICATIONS (2002)

- PhD-theses
- International publications -journal articles (international-refereed)
- International publications –other
- National publications- journal articles
- National publications- other
- Books
- Chapters in Books

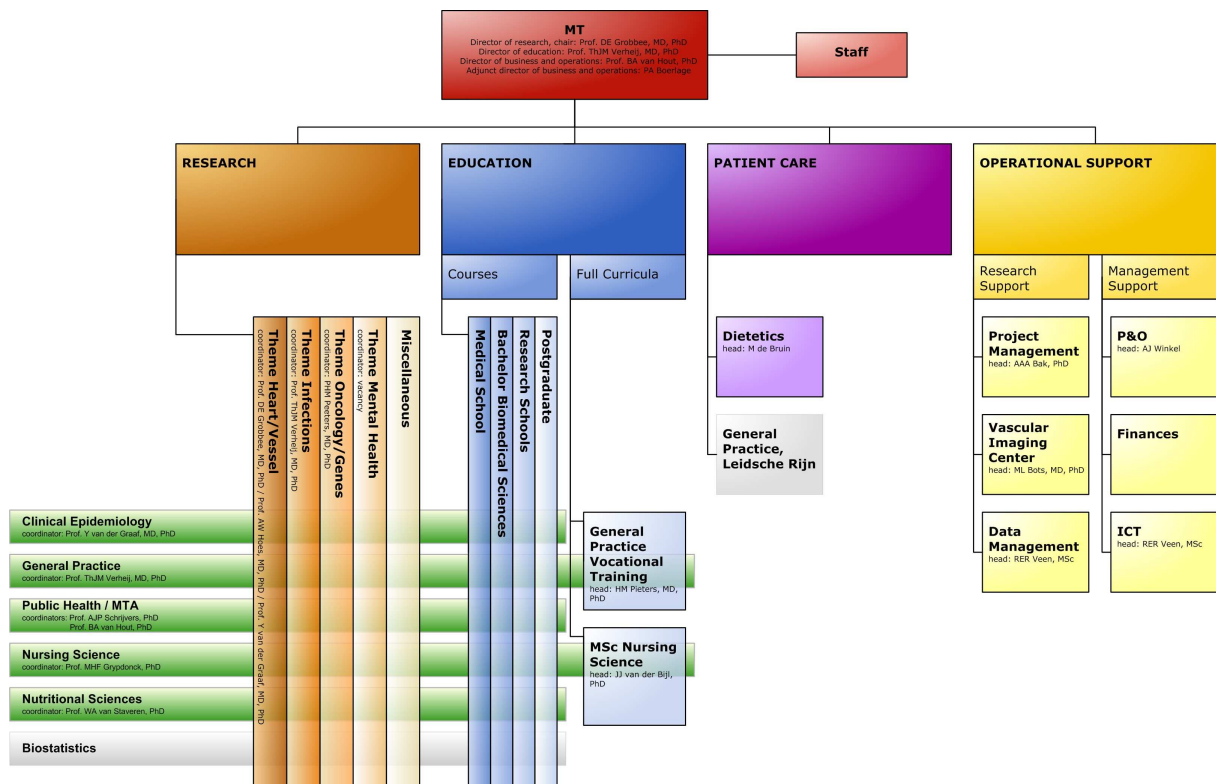


# ORGANIZATION

## Short history

The Julius Center for patient oriented research was established December 16 1996, its sources being the department of epidemiology and public health, and the hospital unit of clinical epidemiology. Both scope and size have since then widely increased, as is reflected by the Julius Centers' subtitles, not in the last part because other departments have been integrated in the current center. In 1999 the department of general practice merged with the department of patient oriented research to become the Julius Center for Patient-Oriented Research and General Practice. In 2002 the department of nursing science and the nutritional sciences group joined the center to become the Julius Center for Health Sciences and Primary Care.

## Organizational structure



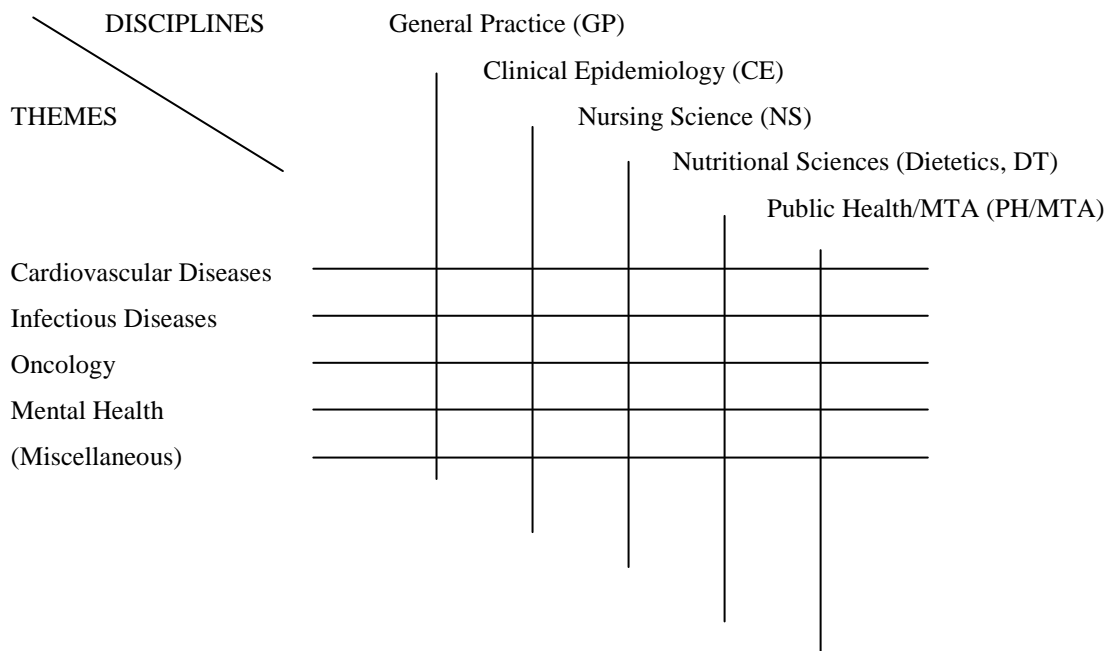




# RESEARCH

## Research organization

The Julius Center contributes to the five main programs of the Utrecht University Medical Center: heart- and vascular disease, infectious diseases, cancer, mental health, and image. The research conducted at the Julius Center is organized according to a matrix structure. The vertical axes are formed by the scientific disciplines of the center: (clinical) epidemiology, general practice, MTA, public health, nursing science, and nutritional sciences. The horizontal axes are made up of the disease-based fields of interest. Themes: heart and vascular disease, infectious diseases, cancer, and mental health. Within these fields, one finds further focussing in subfields, e.g., research on the complications of diabetes mellitus. The Center's policy is to concentrate its own research as much as possible on the matrix's intersections so that the disciplines within the Center can contribute to the scientific themes of the UMC Utrecht as a whole, themes that are also arranged according to the same matrix system.



In addition to the four clinically oriented fields of interest, each with its own research institute within the UMC Utrecht, the UMC Utrecht has a research institute that is focussed on imaging research (Image Sciences Institute). The research of the Julius Center is in part positioned within this research institute and has strong links. The appointment of Dr. Y. van der Graaf in 2001 as a professor of clinical epidemiology in imaging diagnostics underlines the importance given by the Center, not only to the theoretical principles of research on the effectiveness of diagnostics, but also to imaging diagnostics in particular.

In addition to its own research, consultancy in research methods is an important activity for the Julius Center. The Center gladly advises on the design, implementation, analyzing and reporting of research.

## Research themes

### *Cardiovascular diseases*

A considerable amount of the research carried out at the Julius Center is directed towards the cause, diagnosis and prognosis of atherosclerotic vascular diseases. An example is research into the influence of sex hormones on

the condition of the heart and blood vessels in postmenopausal women. In this research not just the menopause is studied but also the effects of using natural or synthetic female hormones. Research is also being carried out into the genetic and non-genetic factors which determine the prognosis of patients with vascular diseases.

In the Utrecht region, the Center is involved with the setting up and scientific study of heart failure outpatient departments. The purpose of this is to gain a better understanding as to the nature and causes of heart failure and to be able to make an earlier diagnosis.

Various cardiovascular studies are being carried out in diabetes mellitus patients. Other studies include the possibly infectious cause of arteriosclerosis, blood pressure and vessel damage amongst young adults, and the risk of thrombosis if the contraceptive pill is used. The Center coordinates a large number of multicenter international cardiovascular prevention and treatment trials (see also 'research services and vascular imaging center').

Finally the Julius Center is involved with many cardiovascular studies and trials from other departments within the Utrecht University Medical Center, especially in the area of diagnostic imaging research and the effectiveness of primary and secondary prevention.

### ***Infectious Diseases***

Infectious diseases research at the Julius Center is primarily concerned with the prevention, diagnosis and prognosis of respiratory tract infections. For example, research is being carried out to establish whether or not certain patient characteristics predict for an abnormal and serious clinical progression of bronchial infections, and the consequences of this for treatment and patient advice.

Infections in patients with diabetes mellitus are also being studied: how can foot sores and amputations in patients with diabetes be prevented by the general practitioner? What is the relationship between infection and the control of diabetes? Finally projects are conducted on *heliobacter pylori* infections and associated upper abdominal complaints.

### ***Oncology***

Oncological research within the Julius Center focuses strongly on cancer in women. This research further builds on the tradition which in the past led to the setting up of 'Preventicon' for breast cancer screening, and 'Cyt-U-Universitair' for cervical smear testing.

With almost 30,000 new cases a year amongst Dutch women, cancer is a serious health threat. Yet the known causes of cancer can explain scarcely 30% of the cases encountered. The possible reason for this is that environmental and hormonal factors were previously researched without consideration being given to the genetic predisposition. Oncological research within the Julius Center is strongly directed towards the interaction between genes and the environment, for example in nutrition. Research is based on biological material originating from two large-scale population studies, namely Prospect and DOM.

Other research projects include determining the best diagnostic techniques for breast cancer (COBRA) and the integrated care given to breast cancer patients.

### ***Mental Health***

Clinical pictures such as depression and schizophrenia occur very frequently within the population and place a heavy burden on the healthcare budget. Although there are very good reasons for thoroughly investigating, for example, the genetic disposition for schizophrenia and emotional disorders, clinical epidemiological research in the area of psychiatry is also an area in which both nationally and internationally little research has been done. By combining expertise in various research fields, such as psychiatry, epidemiology and health studies, the Julius Center provides possibilities for carrying out groundbreaking research. Mental health is a relatively recent line of research within the Julius Center, which is expected to grow further with the planned appointment of a professor in epidemiology of mental health in 2003.

### ***Miscellaneous***

Several research projects do not directly relate to the core themes of research of the Julius Center. Some of these projects are initiated because they contribute to methodological development of one of the core disciplines of the Julius Center. Others have historic background, for instance because of former research environments of staff members. The policy is to complete these project but not pursue continuation for projects not belonging to the main themes, with the exception of a limited number of largely methodological projects. Most of the miscellaneous projects are, obviously, initiated from outside the Julius Center and often because of methodological expertise staff members become involved.

## **Research services and vascular imaging center**

### ***Research services***

The Julius Center has a research services unit and infrastructure to support various scientific research projects and in particular clinical trials. The Julius Center has considerable experience in the efficient design and implementation of clinical trials. The services include research support, monitoring, data management and statistics, an outpatient research center and the vascular imaging center. The outpatient research center is equipped with the necessary facilities for carrying out clinical trials in accordance with Good Clinical Practice guidelines. Participants in various studies present here on a daily basis.

Studies are carried out at the initiative of the Julius Center or in cooperation with the pharmaceutical industry. In addition to clinical trials, population epidemiological research is also carried out here. This cluster of service activities is not only available for researchers at the Julius Center; other researchers at the Utrecht University Medical Center can also take advantage of the expertise and facilities.

### ***Vascular imaging center***

The Vascular Imaging Center (VIC) is a core laboratory facility that supports a range of vascular measurements, with the emphasis on ultrasound techniques. Since the start of the VIC in 1997, it has supported a large number of etiologic, prognostic and therapeutic vascular projects among a-symptomatic and symptomatic men and women from the general population, the outpatient clinic and the hospital using non-invasive techniques.

VIC facilitates all steps needed in a vascular project. The activities of the VIC comprise development of measurement protocols, advise on equipment, performing of actual measurements, training on site and certification, continuous quality assurance and quality control programs during the study, quantitative QC/QA, reading of stored images, data management, statistical analyses and scientific reporting. All activities are performed according to GCP guidelines, and documented 'standard operation procedures' are available for each procedure at the VIC, including the IT-procedures.

For all supported measurements the VIC provides training and certification of technicians for the protocols involved. Training can be given in Utrecht and on-site using the equipment of the participating center.

The supported measurements include:

- subclinical atherosclerosis
- retinal vascular characteristics
- fat distribution



## EDUCATION

### Overview

Participation in numerous educational programs covering various aspects of health sciences or primary care is core-business of the Julius Center whose two main themes are research and education. Combined research and educational tasks guarantee teaching at high - up-to-date - level in all disciplines. The Center is, among others, responsible for the specialization of medical doctors into GP's, a three year vocational training program. Furthermore the Center houses the only Dutch graduate program for nursing science. The Center also actively participates in new educational developments such as the ambitious undergraduate medicine program of the UMC Utrecht that started in 1999 (CRU'99) which is based on interdisciplinary problem-oriented learning. The majority of educational programs are provided in co-operation with other divisions within or outside the Utrecht University Medical Center. Education for the benefit of researchers at the Julius Center takes place by means of participation in recognized research schools such as the Netherlands Institute for Health Sciences (NIHES) ([www.nihes.nl](http://www.nihes.nl)), Infection & Immunity ([www.eijkmanschool.org](http://www.eijkmanschool.org)), Psychology and Health ([pandh.fss.uu.nl](http://pandh.fss.uu.nl)), and Imago ([www.imago.uu.nl](http://www.imago.uu.nl)).

	Clinical Epidemiology	Public Health /MTA	General Practice	Nursing Science	Nutritional Sciences
Undergraduate education					
<b>Bachelor Bio Medical Sciences</b>	x				
<b>Medical School (see also graduate education)</b>	x	x	x	x	x
Graduate education					
<b>Medical School</b>	x	x	x	x	x
<b>MSc Nursing Science</b>				x	
Postgraduate education					
<b>General Practice Vocational Training</b>			x		
<b>Graduate Schools (Nihes, Imago,I&amp;I, P&amp;H)</b>	x	x	x		
Postacademic education					
<b>Advanced training in Public Health</b>		x			
<b>Advanced training in General Practice</b>			x		

## **Bachelor Biomedical sciences**

### ***Description***

In 2002 the Bachelor Master (BaMa) structure has been implemented for Biomedical sciences. In the Bachelor phase staff members of the interfaculty Institute of Risk Assessment Sciences (IRAS), with combined appointment at the Julius Center and the faculty of veterinary medicine, are responsible for the coordination of a four-week course on epidemiology.

### ***Course information***

<b>BMS-bachelor (course names in dutch)</b>	<b>number of students</b>	<b>year in curriculum</b>	<b>discipline*</b>	<b>coordination / participation</b>
Epidemiologie	93	1st year	CE	coordination

\* Discipline: Clinical Epidemiology (CE)

### ***Output 2002***

Number of students

See table above.

## Medical school

### *Description*

The medical curriculum is a continuous six year educational program without a distinction in undergraduate and graduate phase). The curriculum has been completely renewed in 1999 to promote problem based learning (CRU'99). In 2002 we have reached the fourth year of CRU'99 and the fifth and sixth year are being developed. In September 2002 the fourth year courses of the late curriculum were started for the last time. In September 2003 all students of the old curriculum will be in their apprenticeships or otherwise will switch to CRU'99. All disciplines of the Julius Center coordinate and/or participate in courses of the new curriculum.

### *Course information*

CRU '99 (course names in dutch)	number of students	year in curriculum	discipline*	coordination / participation
Oriëntatie geneeskunde	312	1st year	PH/GP	coordination/part.
Stofwisseling	312	1st year	DT	participation
Klinisch lijn onderwijs	312	1st year	GP	coordination
Patiënten volg programma	312	1st year	GP/NS	coordination/part.
Patiënten volg programma	312	2nd year	GP/NS	coordination/part.
Sofwisseling 2	312	2nd year	GP	participation
Groei en ontwikkeling	312	2nd year	DT	participation
Interpretatie klinisch wetenschappelijk onderzoek	288	3rd year	CE/HAG	coordination/part.
Keuzeblok gezondheidsrecht	75	3rd year	PH	coordination
Keuzeblok zorgmanagement	75	3rd year	PH	coordination
Keuzeblok voeding: curatief of preventief	75	3rd year	DT	coordination
Determinanten van ziekte	288	4th year	GP	participation
<b>Currently being developed</b>				
Geneeskunde en maatschappij	288	5th year	PH/GP	coordination/part
Co-schap sociale geneeskunde	288	5th year	PH	coordination
Keuzeonderwijs 'systematisch literatuuroverzicht'	?	4th/5th year	CE	coordination
Co-schap huisartsgeneeskunde	288	5th year	GP	coordination
Keuzeonderwijs 5e en 6e jaar CRU'99 in ontwikkeling	?	5th/6th year	All	coordination

\* Disciplines: General Practice (GP), Clinical Epidemiology (CE), Nursing Science (NS), Nutritional Sciences, (Dietetics, DT), Public Health/MTA (PH)

### *Output 2002*

#### Number of students

See table above.

#### Papers

- Damoiseaux, RAMJ, Slegers LJP, Rutten GEHM. Samenwerkingsverbanden in de eerstelijnszorg rondom problempatienten: eerste ervaringen met een nieuw keuzeco-assistentenschap huisartsgeneeskunde. TMO 2002; 21: 131-5

## MSc Nursing Science

### *Description*

In 2000, a Master of Science degree for the program Health Sciences was established at the Utrecht University. Nursing Science is the first major field of study to be offered within the program Health Sciences. Physiotherapy Science was added as a major field of study in 2002. Both fields of study are taught part-time, over a 4 year time period. The Nursing Science field of study is developed and coordinated by the discipline group Nursing Science, that is part of the Julius Center.

### *Course information*

<b>Health Sciences</b>	<b>nr</b>	<b>ects</b>
<b>Field of study: Nursing Science</b>		135
Academic Skills	course 0.0	7.5
Philosophy and Nursing Theories	course 1.1	7.5
Research Methods 1	course 1.2	7.5
Nursing in Context	course 1.3	7.5
Statistics 1	course 1.4	7.5
Statistics 2	course 2.1	7.5
Management of Nursing Innovations 1	course 2.2	7.5
Research Methods 2	course 2.3	7.5
Advanced Nursing Practice 1	course 2.4	7.5
Quality of Care	course 3.1	7.5
Advanced Nursing Practice 2 (specialization)	course 3.2	7.5
Management of Nursing Innovations 2 (spec.)	course 3.2	7.5
Advanced Nursing Practice 3 (spec.)	course 3.3	7.5
Management of Nursing Innovations 3 (spec.)	course 3.3	7.5
Research Methods 3	course 3.4	7.5
Elective course	course 4.1	7.5
Master Thesis	course 4.2 – 4.4	15

### *Output 2002*

#### Number of students:

- Started 2002: 46
- Graduated: 10 Maastricht students<sup>1</sup>
- Total number: 200 students (144 Utrecht students + 56 Maastricht students<sup>1</sup>)

### *Other relevant information*

- An additional course Nursing Science for HBO-bachelor students in nursing was developed.
- Preparations were made for the visitation of the master course Nursing Science in the year 2003, for example the writing of a self-evaluation study.

---

<sup>1</sup> From 1990 – 2000, the Utrecht University offered a master program in Nursing Science in collaboration with the Maastricht University. There are still a number of Maastricht students in Utrecht finishing this collaborative master program, and graduating from the Maastricht University.



## **General practice vocational training**

### ***Description***

The Julius Center houses one of the eight General Practice Vocational Training Courses in the Netherlands. It admits 60 junior doctors a year. It is a three-year course and consists of a two-year training in general practices and one year in hospitals, healthcare institutes and nursing homes. To serve the needs of the course there is a close cooperation with 155 general practitioners, 4 peripheral hospitals, 18 nursing homes and 15 regional institutes for outpatient mental healthcare. The GPs in training attend the department of general practice for tuition one day a week.

### ***Course information***

Each of the three training years has its own characteristics. In the first year the emphasis is on obtaining and sharpening skills within general practice. In the second year, particular attention is paid to the cooperation between the GP, specialist, Regional Institute for Outpatient Healthcare and the nursing home. In the third-year, the acquisition and integration of in-depth knowledge takes center stage. Every effort is made to increase the expertise and quality of future GPs.

### ***Output 2002***

#### Number of students

In only a few years the capacity has been increased from 72 to a 180 trainees 2002.

- Number of students that finished their GP training in 2002: 51
- Number of students that started their GP training in 2002: 65

### ***Other relevant information 2002<sup>1</sup>***

In 2002 focus was on professionalization of the management structure of the GP vocational training course. Tasks have been delegated from the manager to the adjunct manager, year coordinators, GP practice coordinator and the education coordinator. A work conference in March 2002 led to a new organization structure that was implemented during the course of 2002.

The increase in capacity of the GP vocational training alongside the flourishing of the different sections within the Julius Center led to increasing accommodation shortage. Therefore several parts of the GP training, in particular the teaching locations, were moved to a different location in the Utrecht University area (de Uithof). The resulting separation of staff and support with the actual education threatened the quality, therefore in November 2002 the decision was made to temporarily move the training course organization and personnel to a single location in de Bilt, which will be effectuated in January 2003.

---

<sup>1</sup> For more information see also [www.juliuscenter.nl/huisartsopleiding](http://www.juliuscenter.nl/huisartsopleiding) or 'Jaarverslag 2002 van de Huisartsopleiding Universitair Medisch Centrum Utrecht'.

## Graduate schools (Nihes, ImagO, I&I, P&H)

### Description

The Julius Center participates in four graduate schools, formally accredited as such by the Royal Netherlands Academy of Science (KNAW). This means that staff members and PhD students participate in the research and educational programs of these schools. Participation in more than one school occurs frequently, based on subject and methodological setup of someone's research. Three of the schools have their chair in Utrecht: the graduate school for biomedical imaging (ImagO), the Eijkman-Winkler graduate school for infection and immunity (I&I), and the graduate school for Psychology & Health (P&H). One has its chair in Rotterdam: the Netherlands Institute for Health Sciences (Nihes). Both in Nihes, ImagO and I&I staff members of the Julius Center are responsible for part of the courses.

### Course information

Policy is that all internal PhD-students of the Julius Center follow in part or in whole the educational program of a graduate school, in majority Nihes. In general the educational programs of the schools can be combined such that courses followed at one school may in part substitute the course program for the other school. Therefore allowing students to participate in two schools without investing double time. Thereby students, dependent on their subjects may optimize their individual educational program.

### Output 2002

#### Number of students

The 25 PhD-students that finished their thesis in 2002 participated in the following schools:

- Nihes: 15 students (12 intern, 3 extern)
- ImagO: 12 students (10 intern, 2 extern)
- I&I: 2 students (2 intern)
- P&H: 2 students (1 intern, 1 extern)

Note1: PhD student may participate in more than one research school.

Note2: External PhD students may participate in research schools in which the Julius Center does not participate, these data are not available.

Table: participation in research schools of PhD-students 2002

Name	Date of PhD-degree	In- / extern	Title	Researchschool			
				IMAGO	NIHES	P&H	I&I
Bosch, M.A.A.J., van den	22-1-02	intern	Peripheral arterial occlusive disease in young women	X	X		
Strien, R.T., van	29-1-02	extern	Of mite and man. Epidemiological studies on determinants and effects of exposure to housedust and mite allergens				
Weijnen, C.F.	7-2-02	intern	Helicobacter pylori infection and dyspepsia in primary care. Studies on diagnosis and guideline implementation				X
Ossewaarde, M.E.	8-2-02	intern	Estrogens and cardiovascular disease: studies on risk and risk factors in postmenopausal women	X	X		
Koopman, L.P.	28-2-02	extern	Risk factors for the development of atopic disease in infancy and early childhood				
Venrooij, F.V., van	1-3-02	intern	Metabolic aspects of lipid lowering therapy in patients with type 2 diabetes mellitus		X		
Brouwer, D.H.	11-3-02	extern	Assessment of occupational exposure to pesticides in Dutch bulb culture and glasshouse horticulture				
Bouvy, M.L.	18-3-02	extern	Drug therapy in heart failure: studies on prescribing, drug induced problems and compliance		X		
Klei, W.A., van	16-4-02	intern	Preoperative evaluation. Risk management and implementation aspects	X	X		
Jedelloo, S.	8-5-02	intern	Quality of needs assessment and the provision of assistive devices and services for people with a functional disability				X

Pijnappel, R.	17-5-02	extern	Diagnosis of nonpalpable breast lesions	X	
Erkens, J.A.	21-5-02	intern	Pharmacotherapy in type 2 diabetes mellitus patients: beyond glycaemic control	X	X
Meer, G., de	27-5-02	extern	Airway responsiveness to direct and indirect stimuli. A population based approach		
Dijkstra, K.	28-5-02	intern	Prediction of spontaneous preterm birth		X
Bloemenkamp, D.G.M.	31-5-02	intern	Infections and peripheral arterial disease in young women	X	X
Nederkoorn, P.J.	14-6-02	intern	Non-invasive imaging of carotid artery stenosis	X	X
Bleeker, S.E.	11-9-02	extern	Children with fever without aparent source: diagnosis and dilemmas		X
Rosendal, H.	24-9-02	extern	Comparative cohort studies in transmural care. Three cases of structurally embedded practice in the Netherlands		X
Dijk, D., van	22-10-02	intern	Outcomes after offpump coronary bypass surgery	X	X
Geubels, E.	29-10-02	extern	Prevention of surgical site infections		X
Spoelstra, J.A.	6-11-02	intern	Type2 diabetes mellitus treatment strategies in primary care: Utrecht Diabetes Epidemiology Studies	X	X
Keinan – Boker, L.	12-11-02	intern	Phytoestrogens and breast cancer	X	X
Oren, A.	14-11-02	intern	Young adults and their arteries. Studies on development of vascular damage	X	X
Hel, O.L., van der	6-12-02	intern	Gene-environment interaction in breast and colorectal cancer risk	X	X
Hof, S., van den	6-12-02	extern	Sero-epidemiology of maesles, mumps and rubella in the Netherlands		
Hoogwerf, L.J.R.	17-12-02	extern	Innovation and change in a rehabilitation unit for the elderly through action research		

***Other relevant information 2002***

June 2002      NIHES obtained continuation of accreditation by the Royal Netherlands Academy of Science (KNAW) for the next five years.

## Advanced training in public health

### *Description*

Postacademic training for health care professionals.

### *Course information*

In 2002 the Julius Center organized 5 courses, covering in total nine training days, for health care professionals

Course title (Dutch)	Number of students	Date
Gezondheidsrecht	33	January-March 2002, 9 evenings
Opname en ontslagproblemen op IC afdelingen in Nederland	120	17 January 2002, 1 day
Regionale Indicatieorganen	240	6,20,27 March 2002, 3 afternoons
Spoedeisende zorg	180	21 June 2002, 1 day
Moderne patientenzorg in Nederland	160	6 December 2002, 1 day

### *Output 2002*

#### Number of students

See table above.

## **Advanced training in general practice**

### ***Description***

Post academic training for general practitioners (postacademisch huisartsenonderwijs, PAOH). The focus is on up-to-date information for GPs, evidence based and relevant for general practice.

### ***Course information***

In 2002 the Julius Center organized nine training days for GPs in the Netherlands.

The following table shows the courses (titles in Dutch) for 2002:

<b>Course title (Dutch)</b>	<b>Date</b>
Geriatricie	Friday, 1 February 2002
Kindergeneeskunde	Thursday, 28 February 2002
Allergie	Thursday, 14 March 2002
Acute geneeskunde en palliatieve zorg	Friday, 19 April 2002
Sportgeneeskunde	Friday, 17 May 2002
Gynaecologie en seksuologie	Thursday, 13 June 2002
Gastro-enterologie revisited, een update voor de huisarts	Friday, 20 September 2002
Vijfde Utrechtse diabetesdag	Thursday, 31 October 2002
Problemen met de vaten	Thursday, 28 November 2002

### ***Output 2002***

There is an average participation of 100-150 GPs.



## PATIENT CARE

### Dietetics

The Julius Center is contributing to patient care since Nutritional Sciences and Dietetics joined the Center in 2002.

Dietetics provides patient care for hospitalized patients and out patients at the UMC Utrecht (including the children's hospital Wilhelmina Kinderziekenhuis) and the rehabilitation center 'de Hoogstraat' in Utrecht. Normal, specialized and high level innovative patient care is the main task. The specialized and innovative care, like developing dietary treatment strategies in cardiovascular diseases, oncology, metabolic disorders, epilepsy, cystic fibrosis, malnutrition, eating disorders and obesity, are connected to the scientific themes of the UMC Utrecht. Development of evidence based dietary guidelines is also a major goal.

Teaching other professionals is common practice. In 2002 several guest lectures have been presented to nurses, dietitians, doctors, physical therapists and students of these disciplines.

Education and research performed by the nutritional sciences and dietetics group are related to patient care. There is special interest in the life-style related health problems like obesity, cardiovascular diseases and secondary prevention in oncology.

Care provided in 2002 by the section of dietetics

	1st visits *	Control visits*	Consult units**	Management agreement consult units**
Team 1	1804	5563	10107	9105
- outpatients	664	2385	4989	5230
- hospitalized	1140	3178	5118	3875
Team 2	1987	5752	9736	8445
- outpatients	746	1222	3486	3000
- hospitalized	1241	4530	6250	5445
Team 3			6481	5390
- outpatients			4546	3665
- hospitalized			1935	1725

\*Except 'Wilhelmina Children's Hospital' and 'de Hoogstraat'

\*\*1 consult unit = 30 minutes, except 'de Hoogstraat'





## **BUSINESS AND OPERATIONS**

### **Operational support**

The core activities of the Julius Center, research, education and patient care, are supported by a number of support services.

Research may be supported by project management, the vascular image center and data-management. Project management involves the organization and conduct of patient-related studies. This may concern small studies with less than 20 patients, but also very large studies, including more than thousands of patients from various centers and various countries. Expertise concerning the measurement of vascular parameters (as collected in patient related studies) is bundled in the vascular imaging center. Expertise concerning data-collection and data-management is concentrated within the data-management department.

Management is supported by a financial department and P&O department. The financial department manages all operational support and handles all contracts and financial matters. The P&O department supports the management concerning personnel and handles all procedural matters. The ICT department supports all personnel and supports all departments with respect to computers and software.



## PERSONNEL AND FINANCES

### Personnel, figures

<b>ABSOLUTE NUMBERS</b>	<b>Scientific</b>	<b>Support</b>	<b>Care</b>	<b>TOTAL</b>
Male	77	27	1	<b>105</b>
Female	93	114	32	<b>239</b>
<b>TOTAL</b>	<b>170</b>	<b>141</b>	<b>33</b>	<b>344</b>

<b>FTE</b>	<b>Scientific</b>	<b>Support</b>	<b>Care</b>	<b>TOTAL</b>
Male	47,84	22,34	1	<b>71,18</b>
Female	70,62	81,24	23,03	<b>174,89</b>
<b>TOTAL</b>	<b>118,46</b>	<b>103,58</b>	<b>24,03</b>	<b>246,07</b>

<b>Average FTE</b>	<b>Scientific</b>	<b>Support</b>	<b>Care</b>	
Male	0,63	0,83	1	
Female	0,74	0,73	0,73	

## Personnel, listing

### CLINICAL EPIDEMIOLOGY

#### Professors

Prof. van der Graaf, Y. MD, PhD  
Prof. Grobbee, D.E., MD, PhD  
Prof. Hoes, A.W., MD, PhD (also GP)  
Prof. Brunekreef, B., PhD

#### Coordinating staff

Kluijtmans, M., PhD

#### Senior staff

Algra, A., MD, PhD  
Bots, M.L., MD, PhD  
Noord, P.A.H. van, MD, PhD  
Peeters, P.H.M., MD, PhD  
Schouw, Y.T. van der, PhD

#### Staff

Berkel, T.F.M. van, MD, PhD  
Bom, J.G. van der, MD, PhD  
Burger, H., MD, PhD  
Geerlings, M.I., PhD  
Gils, C.H. van, PhD  
Heijden, G.J.M.G. van der, PhD  
Kalmijn, S., MD, PhD  
Kuck - Koot, V.C.M., MD, PhD  
Moons, K.G.M., PhD  
Stolk, R.P., MD, PhD  
Uiterwaal, C.S.P.M., MD, PhD

#### Junior staff

A, D.L. van der, MSc  
Ariesen, M.J., MSc  
Asselt, K.M. van, MD  
Atsma, F., MSc  
Biesheuvel, C.J., MSc  
Brouwer, C.N.M., MD  
Brussee, J.E., MSc  
Bunck, M.C.M., MSc  
Dijk, J.M., MD  
Duijnhoven, F.J.B. van, MSc  
Elias, S.G., MD  
Erkens, J.A., MSc  
Gorp, M. van, MD  
Hel, O.L. van der, MSc  
Houten, M.E. van, MD  
Keinan - Boker, L., MD  
Klein, W.M., MD  
Koek, H.L., MD  
Koerselman, J., MD  
Kok, L., MD  
Koomen, I., MD  
Kreijkamp - Kaspers, S., MD  
Krevel, C.A.M. van, MD  
Lankveld, M.A.L. van, MD  
Muis, M.J., MD  
Muller, T.H., MD  
Onland - Moret, N.C., MSc  
Oren, A., MD  
Raamt, A.F. van, MD  
Sierksma, A., MSc  
Spoelstra, J.A., MD

Straatman, M.N., MSc  
Tanis, B.C., MD  
Trijp, M.J.C.A. van, MD  
Vos, L.E., MD  
Witte, D.R., MD  
Kok, H.S., MD

#### Support

Batenburg, T.A.J. van  
Broeders, C.A.E., MSc  
Meegdes - Kuiperij, H.  
Zanten - Nout, A. van

### GENERAL PRACTICE

#### Professors

Prof. Hoes, A.W., MD, PhD (also CE)  
Prof. Rutten, G.E.H.M., MD, PhD  
Prof. Verheij, Th.J.M., MD, PhD

#### Coordinating staff

Appelman, C.L.M., MD, PhD

#### Senior staff

Balen, F.A.M. van, MD, PhD  
Bartelink, M.E.L., MD, PhD  
Batenburg, V., PhD  
Bonten, M.J.M., MD, PhD  
Essen, G.A. van, MD, PhD  
Gorter, K.J., MD, PhD  
Hak, E., PhD  
Kuyvenhoven, M.M., PhD  
Mol, S.S.L., MD, PhD  
Numans, M.E., MD, PhD  
Quartero, A.O., MD, PhD  
Rovers, M.M., PhD  
Sachs, A.P.E., MD, PhD  
Wit, N.J. de, MD, PhD

#### Staff

Geijer, R.M.M., MD  
Bosman, M., MSc  
Hörchner, C.D., MD  
Scheele, E.A.E., MSc  
Wouterlood - van Cleeff, I.E., MSc

#### Junior staff

Goudswaard, A.N., MD  
Janssen, P.G.H., MD  
Opstelten, W., MD  
Oudega, R., MD  
Rutten, F.H., MD  
Scheltens, T., MD  
Staij, B.K. van, MD  
Akkerman, A.E., MD  
Bont, J., MD  
Kelder, J.C., MD  
Welschen, I., MSc  
Dam - van Isselt, E.F., MSc  
Dijkstra, K., MSc  
Loon, S. van, MD  
Smit, W.M., MSc  
Weijnen, C.F., MD

Zwet, M.L. van, MSc

**Support**

Blijleven, E.M.  
Hartog, M.A. den  
Knape - van Santen, M.  
Zanten, D.P. van  
Laurens, I.C.  
Prince - Thissen, C.J.M.

**GP VOCATIONAL TRAINING**

**Coordinating staff**

Pieters, H.M., MD, PhD

**Senior staff**

Berkestijn, L.G.M. van, MD, PhD  
Dagnelie, C.F., MD, PhD

**Staff**

Albert, M.C.G.A., MSc  
Banus, G.E.G.M., MSc  
Barels, I.H., MSc  
Beugelink, A.C., MSc  
Boer, L.J. de, MD  
Brink, J.C. van den, MSc  
Bruggen, E. van, MSc  
Feijen, M.K.E., MSc  
Groot, E. de  
Grunt, N.G. de, MD  
Hasselt, P. van, MD  
Hendrickx, E.F.H.M., MD  
Hirsch, R., MD  
Jong, C.C. de, MScN  
Jong, H.H.G. de, MD  
Kruithof, P.J., MSc  
Kwee, S.K., MSc  
Leeuwen, A.J. van, MSc  
Maaijen, J., MSc  
Manschot, P.B.J.T., MD  
Mathot, A.M.M., MD  
Poels, P.J.P.  
Rikkers, G.M., MSc  
Smulders, M.M.Th., MSc  
Stempvoort, W.M. van, MD  
Tiesema, M., MSc  
Truijens, L., MSc  
Vermeulen, M.I., MSc  
Zwart, D.L.M., MSc  
Zwart, S., MD, PhD

**Support**

Bogaards-Godschalk, M.  
Hoeven - van Vriesland, I.A. v den  
Honk, S.M. van  
Rietveld, L.A.  
Reddingius, E.  
Renaud, A.L.D.  
Simon, P.  
Velthof, C.G.M.  
Wolf - Verschuure, T.W.P.M.  
Zwieten, J. van, MD

**PUBLIC HEALTH**

**Professors**

Prof Schrijvers, A.J.P., PhD

**Staff**

Linden, B.A. van der, MD, PhD  
Weert-vOene, G.H. de, MPH, PhD

**Junior staff**

Boot, J.M.D., MSc  
Buwalda, V.J.A., MSc  
Jedeloo, S., MSc  
Jörg, F., MPH  
Michels, A.A.A.A., MSc  
Villevoeye, D.P.J.

**Support**

Hageman - Raatgever, G.M.C.  
Straaten, M.C. van

**MTA**

**Professors**

Prof. Hout, B.A. van, PhD

**Senior staff**

Bonneux, L.G.A., MD, PhD  
Buskens, E., MD, PhD

**Staff**

Maillé, A.R., PhD  
Stel, H. van, PhD

**Junior Staff**

Hemel, M.A.M. van, MSc  
Janssen, M.P., MSc  
Verschuuren, M., MSc

**Support**

Bruin, C.E.T. de

**NURSING SCIENCE**

**Professors**

Prof. Grypdonck, M.H.F., PhD  
Prof. Shortridge - Bagget, L., PhD  
Prof. Duijnstee, M.S.H., PhD  
Prof. Winnubst, J.A.M., PhD

**Coordinating staff**

Bijl, J.J. van der, PhD  
Ketelaar, H.

**Senior staff**

Gamel, C.J., PhD  
Leeuw, J.R.J. de, PhD  
Lendemeijer, H.H.G.M., PhD  
Linge, R.H. van, PhD  
Ros, W.J.G, PhD  
Schuurmans, M.J., PhD  
Vliet, M.J. van, PhD  
Winter, C.P. de, MPhil

**Junior staff**

Dielis - van Houts, A.M., MSc  
Goverde, C.A.M., MSc  
Hafsteinsdottir, T.B., MSc  
Hooft - Leemans, G. van der, MSc  
Horenberg, A.H., MSc  
Kars, M.C., MSc  
Kol, E.A.H.M.R. van, MSc

Kolk - Kousemaker, M.J. vd, MSc  
Laar, C.W.E. van de, MSc  
Megens, Y.A.C.T., MSc  
Meijel, B.K.G. van, MSc  
Moes, H., MSc  
Oosterom, M., MSc  
Schoonhoven, L., MSc  
Swieten - Duyfjes, E. van, MSc  
Tromp, D.M., MSc  
Vree, W. de, MSc  
Weijman, I., MSc  
Eussen, S.A.  
Haakman, R.A.R.  
Huitema, M.C.  
Schipperheijn - Martin, A.F.  
Verbaan, E.C.  
Weldam, S.D.W.  
Wijbenga, J., MSc  
Zweers - de Groot, J.A.M.

**Supporting staff**

Bihari, M.U.  
Dekker, M.M.  
Schipper, A.  
Winkelman, L.

**NUTRITIONAL SCIENCES/DIETETICS**

**Professors**

Prof. Staveren, W.A., PhD

**Senior staff**

Iestra, J.A.  
Roos, N.M. de, PhD

**Coordinating staff**

Bruin, M. de

**Staff**

Achterberg, M.D.  
Bolleurs, C.  
Carbasius Weber, E.C.  
Fabels, B.M.  
Groot, M. de, MSc  
Groot, S.D.W. de  
Hanegraaf, R.  
Harten, J.N.N. van  
Hazendonk, J.F.M. van  
Heest - Cooman, P.D. van  
Hiemstra, G.K.  
Hollander - Kraaijeveld, F.M.  
Hurk, Th.A.M. van den  
Janse, L.C.M.  
Jonge - Wierda, J.I. de  
Jongh - Kampherbeek, E.H. de  
Kemp, K.  
Kempen - Schipper, E.A. van  
Leermakers - Vermeer, J.M.P.  
Luyt, J.W.H. van der  
Michelsen - Huisman, A.D.  
Remeijnse - Meester, T.A.W.  
Renken - Terhaardt, J.W.M.  
Runia, S.  
Schreurs, J.C.M.

Steenhagen, E.  
Stijvers - de Leeuw, W.E.  
Timmer, C.  
Wamsteker, E.W.  
Wijngaard, K.N. van den  
Woestenenk, J.W.

**Support**

Gil, A.  
Maarseveen - Hendriks, J.M. van

**MANAGEMENT SUPPORT**

**Coordinating staff**

Boerlage, P.A.

**Administrative staff**

Alibaks, R.  
Horstink, G.H.M.  
Kok - Kortekaas, M.G.A.  
Schouten, R.B.  
Wees - Ester, P.A. van

**Personal and organisation**

Gerritsen, H.F.  
Nimwegen, M. van  
Winkel, A.J.

**Supporting staff**

Jong, P.D. de  
Meerwijk, E.L.  
Riet, M.F. van 't  
Plomp, E.P.

**I&A**

Dieleman, K.P.  
Harkema, J.C.  
Nelissen, R.  
Zwaan, G.W. de

**RESEARCH SUPPORT**

**Coordinating staff**

Bak, A.A.A., MD, PhD  
Veen, R.E.R., MSc

**Project management and Vascular Imaging Center**

Bemmel, A.W. van  
Berg - de Jong, A.C.J. van de  
Brevet, M.  
Brink, J.J. van de  
Burema, A.J.  
Drijvers, J.J.M.M.  
Eckhardt, M.D.  
Edlinger, M., MSc  
Elzen, M.M. van den  
Es - Gulinck, M.K. van, MD  
Gilsing, M.G., MD  
Groenberg - Loggers, I.C.T.  
Haars, G., MSc  
Hafkamp, M.C.  
Hees, Y. van  
Hemert, G.B. van  
Hijman, L.E.M.  
Hoorn - van Kempen, M.H. v der

Huizenga, T., MSc  
Isterdael, C.E.D. van, MSc  
Izeboud, L.D.  
Jetses - De boer, E.  
Kaptein - Waterink, J.H.  
Kemmeren, J.M., PhD  
Koppelman, J.B.  
Leeuw, M. de, MSc  
Meer - Poelwijk, M.J. van der  
Meijer - Erbeveld, M.  
Meijer, R.  
Meijers, G.E.P.M.  
Metselaar - van den Bos, J.J.  
Mooiweer - Boogaardt, D.B.  
Nielen, E.M.G.  
Nijssen, K.M.  
Nollen, C.Th.  
Noordzij- van Willigen, J.J.  
Olivier, H.  
Paddenburg, D.  
Pluijm - van Laar, E.  
Prins, C.  
Ram, E.A.M.  
Ram, J.M.  
Richard, W., MD  
Rijswijk - Bos, A.M.  
Roeterdink, A.J.  
Rutgers, A.F.  
Scholten, M.J.G.  
Sikking, I.E.M.  
Slothouber, B.  
Sluis - Eising, S.L.  
Sonsma, A.C.M.

Suiker, A.M.H.  
Tims - Polderman, C.A.J.  
Vendrig, L.  
Vliet - Boerkamp, B.B.M. van der  
Vlist, B. van der  
Wieman, R.L.L.M.  
Wijnia - Lemstra, E.A.  
Wilken, R.C.M.  
Wisse, H.  
Zeguers, V.J.M.  
Zwart, L.M.

#### *Datamanagement*

Boekema - Bakker, N., MSc  
Breeijen, J.H. den, MSc  
Gouw, A.P. van der  
Haak - van Mourik, M.L. van den  
Huisinga, P.  
Leus, F.  
Lom, R. van  
Maaskant, J.W.  
Petersen, R.B. van  
Slotboom, B.J.  
Spithoven - van Leeuwen, E.H.J.  
Zuithoff, N.P.A

#### *Support*

Eden, P.M. van  
Linnebank – Hillebrand, N.  
Maekelbergh, C.E.  
Munnik, J.J. de  
Verheij, F.A.  
Stern - van der Heuvel, J.J.M.

## Financial report

### *Financial overview 2002*

	K€	K€		K€	K€
<b>Personnel costs</b>	<b>10.957</b>		<b>Income</b>	<b>12.842</b>	
Personnel		10.256	UMC Utrecht		4.402
External personnel		701	GPVT		2.189
			Other		6.251
<b>Investments</b>	<b>326</b>				
Laboratory		40			
Computers		207			
Furniture		79			
<b>Running costs</b>	<b>1.170</b>				
Travel & Lodging		223			
Post & Phone		154			
Office		135			
Laboratory		418			
Other		240			
<b>UMC Overhead</b>	<b>389</b>				
<b>Total</b>	<b>12.842</b>		<b>Total</b>		<b>12.842</b>

### *Organizations and companies providing funding*

Altrecht	Nederlandse Organisatie voor Wetenschappelijk onderzoek (ZonMW)
Astmafonds	Novo Nordisk Farma bv
Astra Zeneca	Organon nederland bv
Bowling Pfizer	Pfizer bv
College van Zorgverzekeraars	Provincie Utrecht
Eli-Lilly bv	SBOH
Europese Unie	Stichting Eerstelijns Voorziening Almere, Almere
International Health Foundation	Stichting Instituut GAK
Landelijk Centrum Verpleging & Verzorging	Stichting RIPAG
Landelijke Stichting Beheer Kruiswerk	Stichting centraal fonds Reserves Voormalig
Ministerie van Volksgezondheid , Welzijn en Sport	Vrijwillige Ziekenfondsverzekering
Nationaal Reumafonds	UMC Utrecht
Nederlandse Ambulance Instituut	World Cancer Research Fund
Nederlandse Hartstichting	World Health Organisation
Nederlandse Kankerbestrijding	Zorgonderzoek Nederland



## RESEARCH PROJECTS (2002)

### Cardiovascular diseases

#### *PhD projects, finished 2002*

<i>Name</i>	<i>Title</i>	<i>JC</i>	<i>Discipl</i>
Bloemenkamp, D.G.M.	Infections and peripheral arterial disease in young women	intern	CE
Bosch, M.A.A.J. van den	Peripheral arterial occlusive disease in young women	intern	CE
Bouvy, M.L.	Drug therapy in heart failure: studies on prescribing, drug induced problems and compliance	extern	CE/GP
Dijk, D. van	Outcomes after off-pump coronary bypass surgery	intern	CE
Erkens, J.A.	Pharmacotherapy in type 2 diabetes mellitus patients: beyond glycaemic control	intern	CE
Nederkoorn, P.J.	Non-invasive imaging of carotid artery stenosis	intern	CE
Oren, A.	Young adults and their arteries. Studies on development of vascular damage	intern	CE
Ossewaarde, M.E.	Estrogens and cardiovascular disease: studies on risk and risk factors in postmenopausal women	intern	CE
Spoelstra, J.A.	Type2 diabetes mellitus treatment strategies in primary care: Utrecht Diabetes Epidemiology Studies	intern	CE
Venrooij, F.V. van	Metabolic aspects of lipid lowering therapy in patients with type 2 diabetes mellitus	intern	CE

#### *PhD-projects, ongoing*

<i>Name</i>	<i>Title</i>	<i>JC</i>	<i>Discipl</i>
A, D.L. van der	Biologic and lifestyle determinants of body iron storage in relation to cardiovascular disease in postmenopausal women	intern	CE
Ariesen, M.J.	Risk of intracerebral haemorrhage in patients after cerebral ischaemia	intern	CE
Asselt, K.M. van	Genetic determinants of age at menopause *see also ONCOLOGY	intern	CE
Atsma, F.	The importance of age at menopause in optimising cardiovascular risk profile in women	intern	CE
Bax, L.	Kidney function and atherosclerosis	extern	CE
Beld, A.W. van den	Hormonal determinants of successful aging in men	extern	CE
Bruggink, P.	Value of doctor- and nurse directed multidisciplinary interventions in heart failure	extern	CE/GP
Bruin, M. de	Detection of drug-induced cardiac arrhythmias	extern	CE/GP
Dijk, J.M.	Arterial stiffness and risk of cardiovascular disease: SMART study	intern	CE
Dijk, K. van	Optimizing treatment for severe hemophilia	extern	CE
El Fakiri, F.	Preventive cardiovascular care in deprived neighbourhoods	extern	GP
Elzen, A. van der	Early determinants of cardiovascular risk from childhood to young adulthood	extern	CE
Gorp, M.J. van	Paramagnetic defects and defective BSc valves	intern	CE

Goudswaard, A.N.	STIP: Insulin therapy in the Utrecht Diabetes Project	intern	GP
Hafsteinsdottir, T.B.	Neurodevelopmental treatment in the early stages of stroke	intern	NS
Hollander, M.	The role of atherosclerosis, hormones and genes in stroke	extern	CE
Houten, M.E. van	Effects of testosterone supplements in testosterone deficient men, PhDproject1	intern	CE
Kamphuis, H.C.M.	Quality of life in patients with an implantable Cardioverter-Defibrillator <sup>see also Mental Health</sup>	intern	NS
Kelder, J.C.	Diagnostic strategies in patients suspected of heart failure	intern	CE/GP
Klein, W.M.	MRA of periferal vessels	extern	CE
Koek, H.L.	Facts and figures of cardiovascular diseases in the Netherlands	intern	CE
Koerselman, J.	The role of collateral circulation in coronary ischemic events	intern	CE
Kok, H.S.	Genetic determinants of age at menopause* <sup>see also ONCOLOGY</sup>	intern	CE
Kok, L.	Phytoestrogens and frailty in postmenopausal women	intern	CE
Kreijkamp – Kaspers, S.	The benefits of dietary phyto oestrogens intake, PhD-study 2	intern	CE
Laar, F. van de	Nutritional and pharmaceutical treatment aspects in newly diagnosed type 2 diabetes patients in general practice	extern	GP
Lebrun, C.E.I.	The role of oestrogens in frailty in elder women: optimising the indication for prevention therapy	extern	CE
Muis, M.J.	Insuline Injections and Atherosclerosis	intern	CE
Muller, T.H.	Androgens and the health of the ageing male	intern	CE
Nathoe, H.M.	The octostent trial	extern	CE
Oudega, R.	Diagnosis and prognosis of deep vein thrombosis	intern	GP
Pruissen, M.	Genetic determinants for new vascular events in patients with cerebral ischaemia	extern	CE
Raamt, A.F. van	Prospective study on role of collateral circulation in coronary ischemic events	intern	CE
Rheeder, P.	Glucose intolerance and the insulin resistance syndrome in South African Blacks	intern	CE
Rutten, F.H.	Heartfailure in COPD patients	intern	CE/GP
Schaaf, I. van der	Diagnostic value of CT angiography in patients with an acute hemispheric ischemic stroke	extern	CE
Scheltens, T.	Leidsche Rijn Health Care Project, Phase 1	intern	CE/GP
Schoonhoven, L.	Prediction of pressure ulcers: problems and prospects	intern	CE/NS
Schryver, E. de	Antitrombotic treatment in secondary prevention of cerebral ischaemia	extern	CE
Seppenwolde, J.H.	Brain magnetic resonance imaging to detect mechanical heart valve defects	intern	CE
Sierksma, A.	Alcohol and cardiovascular disease	intern	CE
Stofmeel, M.A.M.	Quality of life for patients with a pacemaker	intern	CE
Straatman, M.N.	Depression and cardiovascular disease: de role of nutrition	intern	CE
Tanis, B.	Implementing cardiovascular risk-profiling in primary care	intern	CE
Tjeerdsma, H.	Minor and major vascular diseases of the brain	extern	CE
Tjoeng, M.	Pharmacist-directed interventions in early heart failure	intern	CE/GP

Trijp, M.J.C.A. van	Blood pressure and cardiovascular disease	intern	CE
Uitewaal, P.	Diabetes control in Turkish immigrants	extern	GP
Vacancy	Effects of testosterone suppl. on functional mobility, quality of life, body composition, cognitive function, vasc. ageing, and bone mineral density in testosterone deficient men	intern	CE
Vacancy	SMART: prevalence of non-clinical manifest arterial disease	intern	CE
Voormolen, M.	Effectiveness of percutaneous vertebroplastics, the VERTOS trial	extern	CE
Vos, L.E.	Early determinants of cardiovascular risk in the young: Two Dutch cohorts.	intern	CE
Weijman, I.	Coping with diabetes mellitus and (psychic) tiredness in work environment	intern	GP/NS
Wermer, M.	Aneurysm Screening after surgical Treatment in Ruptured Aneurysms (ASTRA)	extern	CE
Wijk, I. van	Life Long After Cerebral Ischaemia	extern	CE
Witte, D.R.	The value of flow-mediated vasodilatation measurements of the brachial artery in cardiovascular risk assessment	intern	CE

---

***Other projects, 2002 finished***

<i>Name</i>	<i>Title</i>	<i>JC</i>	<i>Discipl</i>
Stolk, R.P.	Glycemic and lipid control in patients with diabetes mellitus type 2 in general practise. Diabetes care in regio Gorinchem.	intern	CE/GP

---

***Other projects, ongoing***

<i>Name</i>	<i>Title</i>	<i>JC</i>	<i>Discipl</i>
Bijl, J.J. van der	Effectivity of an educational program in self management in diabetes mellitus	intern	NS
Elvan, A.	Predictive value of arterial stiffness measurements during pregnancy for complications	extern	CE
Gilsing, M.G.	ADVANCE: Effects of Perindopril-Indapamide and Glicazide on cardiovascular disease in patients with diabetes mellitus type 2	intern	CE
Goessens, B.M.B.	Screening for second manifestations of atherosclerotic disease: impact on patient management and cardiovascular risk	extern	CE
Graaf, Y. van der	Follow-up Dutch BSc cohort	intern	CE
Graaf, Y. van der	SMART: Second Manifestations of ARterial disease	intern	CE
Grobbee, D.E.	Effects of perindopril on cardiac mortality and morbidity	intern	CE
Janssen, M.P.	CEA carotis angioplasty vs endarterectomy	intern	MTA
Roos, N.M. de	research project nutritional sciences	extern	DT
Schouw, Y.T. van der	Endogenous estrogens and cardiovascular disease risk in postmenopausal women	intern	CE
Soebagijo, A.	Visceral obesity and the epidemic of diabetes and cardiovascular disease in Indonesia, a clinical epidemiologic study in Surabaya	extern	CE
Sonsma, A.C.M.	Application of nurse practitioners at the vascular center	intern	CE
Stel, H. van	Quality of life after cardiovascular disease	intern	MTA

## Infectious diseases

### *PhD projects, finished 2002*

<i>Name</i>	<i>Title</i>	<i>JC</i>	<i>Discipl</i>
Bleeker, S.E.	Children with fever without aparent source: diagnosis and dilemmas	extern	CE
Geubels, E.	Prevention of surgical site infections	extern	CE
Hof, S. van den	Sero-epidemiology of maesles, mumps, rubella in the Netherlands	extern	CE
Weijnen, C.F.	Helicobacter pylori infection and dyspepsia in primary care. Studies on diagnosis and guideline implementation	intern	GP

### *PhD-projects, ongoing*

<i>Name</i>	<i>Title</i>	<i>JC</i>	<i>Discipl</i>
Akkerman, A.E.	ARTI 2: (In)correct prescription of antibiotics in acute respiratory tract infections in primary care	intern	GP
Bont, J.	CELLO: Prognosis in lower respiratory tract infections	intern	GP
Brouwer, C.N.M.	Health related quality of life in children with recurrent acute otitis media	intern	CE
Brussee, J.E.	PIAMA: The natural history of astma in children	intern	CE
Duijn, H.J. van	Views on respiratory tract symptoms; similarities and differences between doctors and patients	intern	GP
Geijer, R.M.M.	IJsselstein project: pneumonial function decay in smokers	intern	GP
Katier, N.	Whistler: Wheezing illness study Leidsche Rijn	extern	CE
Koomen, I.	Educational and behavioral problems in schoolage survivors of bacterial meningitis	extern	CE
Oosterheert, J.J.	Cost-effectiveness of viral assessments in patients with lower respiratory tract infections	extern	CE
Opstelten, W.	PINE: Effectiveness of epidural injection in prevention of postherpic neuralgia in the elderly	intern	GP/MTA
Posthouwer, D.	Optimizing treatment strategies for patients infected with hepatitis C: an international cohort study	extern	CE
Schonbeck, Y.	PRIMAKID: Prevention of respiratory infections and management in children with recurrent respiratory tract infections	intern	GP
Staaij, B.K. van	NATAN: cost-effectiveness of tonsillectomy	intern	CE/GP
Vervoort, S.C.J.M.	Factors influencing therapy-fidelity in the view of HIV infected patients	extern	NS
Welschen, I.	ARTI 1: Optimising antibiotic prescribing for acute respiratory tract infections in primary care	intern	GP

### *Other projects, ongoing*

<i>Name</i>	<i>Title</i>	<i>JC</i>	<i>Discipl</i>
Berg, J.B. van den	HIV-Care for non-European/European patients	extern	CE
Brouwer, C.N.M.	Health-related quality of life in children with recurrent acute otitis media	extern	CE
Hak, E.	Utrecht GP Network (HNU)	intern	GP
Sachs, A.P.E.	Improving therapeutic strategies in asthma patients	intern	GP
Vacancy	Otitis externa project	intern	GP

Verhoeff, M.

The effectiveness of treatment with co-trimoxazol in children with intern CE  
chronic otitis media

## Oncology

### **PhD projects, finished 2002**

<i>Name</i>	<i>Title</i>	<i>JC</i>	<i>Discipl</i>
Hel, O.L. van der	Gene-environment interaction in breast and colorectal cancer risk	intern	CE
Keinan – Boker, L.	Phytoestrogens and breast cancer	intern	CE
Pijnappel, R.M.	Diagnosis of nonpalpable breast lesions	extern	CE

### **PhD-projects, ongoing**

<i>Name</i>	<i>Title</i>	<i>JC</i>	<i>Discipl</i>
Asselt, K.M. van	Genetic determinants of age at menopause* <sup>see also CARDIOVASCULAR</sup>	intern	CE
Brouha, X.	Increasing incidence of advanced head and neck cancer: Factors related to delay in seeking diagnosis. Phd-study 2	intern	NS
Derks, W.	Prospective study comparing quality of life effects of major head and neck cancer treatment between elder vs young patients <sup>see also MH</sup>	extern	NS
Duijnhoven, F.J.B. van	The effect of hormone replacement therapy on mamographic density: determinants of susceptibility	intern	CE
Elias, S.G.	Famine in Holland; has caloric restriction reduced subsequent cancer risk?	intern	CE
Haars, G.	Caloric restriction during childhood and subsequent breast cancer risk	intern	CE
Hoorntje, L.	Reliability of stereotactic large-core needle biopsy for nonpalpable breast disease	extern	CE
Kok, H.S.	Genetic determinants of age at menopause* <sup>see also CARDIOVASCULAR</sup>	intern	CE
Meiss – de Haas, C.	Multidisciplinair Oncologische afdelingen in algemene ziekenhuizen	intern	PH
Onland – Moret, N.C.	Endogenous hormones and polymorphisms of estrogen pathway genes and breast cancer	intern	CE
Oosterom, M.	Effectiveness of oncological followup by specialized nurses	intern	NS
Rinaldi, S.	Urinary metabolites and postmenopausal breast cancer	extern	CE
Tromp, D.M.	Increasing incidence of advanced head and neck cancer: Factors related to delay in seeking diagnosis.	intern	NS
Vacancy	Effect of comprehensive counseling by nurse specialist: prospective randomized study in patients with head and neck cancer. <sup>see also MHealth</sup>	intern	NS
Vacancy	IGF polymorphisms and diet in relation to breast tissue density	intern	CE
Vacancy	Physical activity in relation to breast cancer	intern	CE

### **Other projects, finished**

<i>Name</i>	<i>Title</i>	<i>JC</i>	<i>Discipl</i>
Lankveld, M.A.L. van	Oncological gynaecology	intern	CE

### **Other projects, ongoing**

<i>Name</i>	<i>Title</i>	<i>JC</i>	<i>Discipl</i>
Huitema, M.C.	Effectiveness of oncological follow up by specialized nurses	extern	NS
Gild, C.H. van	Fruit and vegetables in relation to breast cancer - EPIC	intern	CE
Kuck – Koot, V.C.M.	New cancer cases in PROSPECT-EPIC followed for recurrence	intern	CE

	and/or metastases		
Noord, P.A.H.	DOM project: Diagnostic investigation mamma carcinoma	intern	CE
Numans M.E. / Quartero A.O.	Diversity in fruit and vegetables in relation to stomach-cancer – EPIC	intern	HAG
Peeters, P.H.M.	PROSPECT: European prospective investigation into cancer and nutrition	intern	CE

## Mental Health

### *PhD projects, ongoing*

<i>Name</i>	<i>Title</i>	<i>JC</i>	<i>Discipl</i>
Berg, JP. van de	Quality of life in ALS	extern	CE
Boonstra, G.	Quiting-study antipsychotic medicine	extern	CE
Cohen, D.	Schizophrenia and diabetes mellitus	extern	CE
Denys, D.	A score for predicting response to pharmacotherapy in obsessive-compulsive disorder	extern	CE
Derks, W.	Prospective study comparing quality of life effects of major head and neck cancer treatment between elder vs young patients <sup>see also ONC</sup>	extern	NS
Fluttert, F.A.J.	Prevention of violence in forensic psychiatry	extern	NS
Hillegers, M.H.	The impact of life events, familial loading and their interaction on the onset of mood disorders in children of bipolar parents	extern	CE
Kamphuis, H.C.M.	Quality of Life in patients with an implantable Cardioverter-Defibrillator <sup>see also CARDIOVASCULAR</sup>	intern	NS
Lee-Kwon, S.	Primary Caregivers perception of a long term care facility for their demented elders in Korea and intervening factors	extern	NS
Leeuw, M. de	Balance between availability en need of healthcare in chronic psychiatric patients	intern	NS
Meijel, B.K.G. van	Early signaling and early intervention in psychosis prevention in patients with schizophrenia	intern	NS
Meijer, B	Determinants of cognitive decay in the HALE project	extern	CE
Michels, A.A.A.A.	Monitoring quality of care for substance dependent patients	extern	PH
Putte, E.M. van der	Chronic fatigue syndrome in childhood: biological and psychological determinants	extern	CE
Ravelli, D.P.	Schizophrenia and related psychoses	intern	PH
Vacancy	Interaction and communication problems in toddlers as predictors for autism and mental development problems	intern	CE
Vacancy	Effect of comprehensive counseling by nurse specialist: prospective randomized study in patients with head and neck cancer. <sup>see also ONC</sup>	intern	NS
Vergouwen,T.	Management of depression in primary care: patient compliance and prognosis	extern	CE/GP
Zegwaard, M.I.	Family care of elder persons with chronic psychiatric problems and difficult behaviour	extern	NS
Zwirs, B.	ADHD in children of different ethnic origin	extern	CE

### *Other projects, finished 2002*

<i>Name</i>	<i>Title</i>	<i>JC</i>	<i>Discipl</i>
Wit, N.J. de	Quality of life in irritable bowel syndrome	intern	GP

### *Other projects, ongoing*

<i>Name</i>	<i>Title</i>	<i>JC</i>	<i>Discipl</i>
Burger, H	Prediction and prevention of psychosis in youngsters entering regional institutions for ambulatory mental health care	intern	CE
Geerlings, M.I.	Regional case registry of psychiatric disturbances in the West and	extern	CE



	Central Netherlands		
Keet, R.	The european first episode schizophrenia trial	extern	CE
Kooij, J.J.S.	Efficacy and safety of methylphenidate in 45 adults with ADHD. A randomised placebo-controlled double-blind cross-over trial	extern	CE
Quartero, A.O.	Relaxation by physical exercise	extern	CE/MTA
Villevoye, D.P.J.	Out of school prevention of alcohol and drugs in the European countries	extern	PH
Vreede, I. de	Prediction of response to ECT with routinely collected data in major depression	extern	CE
Weert - van Oene, G.H. de	Inventarisation of needs, demands and supply in mental health care in the midwest Utrecht region	extern	PH
Weert - van Oene, G.H. de	Baseline measurement question orientation of mental health care in MW-Utrecht	extern	PH
Weert - van Oene, G.H. de	Integrated care for psychogeriatric patients in The Hague	extern	PH

## Miscellaneous

### *PhD projects, 2002 finished*

<i>Name</i>	<i>Title</i>	<i>JC</i>	<i>Discipl</i>
Brouwer, D.H.	Assessment of occupational exposure to pesticides in Dutch bulb culture and glasshouse horticulture	extern	CE
Dijkstra, C.	Prediction of spontaneous preterm birth	intern	GP
Hoogwerf, L.J.R.	Innovation and change in a rehabilitation unit for the elderly through action research	extern	NS
Jedelloo, S.	Quality of needs assessment and the provision of assistive devices and services for people with a functional disability	intern	PH
Klei, W.A. van	Preoperative evaluation. Risk management and implementation aspects	intern	CE
Koopman, L.P.	Risk factors for the development of atopic disease in infancy and early childhood	extern	CE
Meer, G. de	Airway responsiveness to direct and indirect stimuli. A population based approach	extern	CE
Rosendal, H.	Comparative cohort studies in transmural care. Three cases of structurally embedded practice in the Netherlands	extern	PH
Strien, R.T. van	Of mite and man. Epidemiological studies on determinants and effects of exposure to housedust and mite allergens	extern	CE

### *PhD-projects, ongoing*

<i>Name</i>	<i>Title</i>	<i>JC</i>	<i>Discipl</i>
Bergman, G.	Manipulative treatment for shoulder disorders	extern	CE
Biesheuvel, C.J.	Missing values, (methodological research)	intern	CE
Boer, L.J. de	ENIGMA: Erection disturbances in general practice	intern	GP
Bollen, C.W.	High frequency oscillation ventilation versus conventional ventilation in children admitted to pediatric intensive care units	extern	CE
Bosch, J.E. van den	Risk management of peri and postoperative complications	extern	CE
Bruijn, C. de	Cognitive behavioral treatment for sub-acute shoulder disorders	extern	CE
Bruns, E.C.	Support of parents of premature children	extern	NS
Chaves, L.	Prevention of pressure ulcers in home care	extern	NS
Eland-Kok, P.	Effect study after guidelines for itching, study 2	extern	NS
Geraets, J.	Operant behavioral treatment for chronic shoulder disorders	extern	CE
Jacquet, JB	Prediction of functional recovery and work impairment after neural damage of the upper extremity.	extern	CE
Jansen, A.J.M.	Differences in health perception between physician and patient in chronically ill children	extern	CE
Jörg, F.	Objectivity in individual needs assessment for access to long-term care	intern	PH
Kars, M.C.	Problems of parents with a chronically ill child	intern	NS
Klijn, A.	Efficacy of home-uoflowmetry in children with dysfunctional voiding (UFO)	extern	CE
Kolk-Kousemaker, MJ vd	150 years of innovation in 'kruiswerk'	intern	NS/PH

Konijnenberg, Y.	Pain of unknown origin in children	extern	CE
Kuijpers, T.	Prognostic cohort study on shoulder disorders in primary care with nested clinical trials	extern	CE
Linden, F.A.H. van der	Determinants of end-of-life decisions in ALS: prospective study	extern	CE
Loth, C.A.	Nursing care in out-patient Methadone programs in Holland	extern	NS
Medendorp-van Os, H.	Effect study after guidelines for itching, study 1	extern	NS
Ostendorf, M.	Total hip replacement in The Netherlands and Sweden: epidemiology and outcome	extern	PH
Piepers, S.	Effectiveness of non-invasive artificial respiration at home in patients with ALS	extern	CE
Polet, J.	Development and validation of a multidisciplinary protocol for withdrawal of artificial breathing on IC units	extern	NS
Rademakers, K.	Additional value of MRI in prediction of psychomotorical development in premature children: a cost benefit analysis	extern	CE
Snepvangers, Y.	Longfunctieonderzoek als nieuwe prognostische parameter bij beademde kinderen met "infantile respiratory distress syndrome".	extern	CE
Speets, A.	The value of diagnostic imaging in general practice	extern	CE/GP
Vallenga, D.	Riskmanagement in care of mentally retarded patients with epilepsy	extern	NS
Verbunt, J.	Cohort study on disuse in low back pain	extern	CE
Verschuuren, M.	Pine HTA study: evaluation of health profiles. versus standard Qalys	intern	MTA

---

***Other projects, ongoing***

<i>Name</i>	<i>Title</i>	<i>JC</i>	<i>Discipl</i>
Buskens, E.	PATMAN: Patient workflow management systems	intern	MTA
Geisel, S.	De rol van melatonine en de biologische klok bij kinderen met enuresis nocturna	extern	CE
Grypdonck, M.H.F.	Improving the care of chronically ill through qualitative research	intern	NS
Kalmijn, S.	Neuromuscular diseases and cognitive functions	intern	CE
Lemmens, L.	Implementation of POS clinics in Dutch hospitals	extern	CE
Linden, B.A. van der	Meaning of American Intergrated Care programs to Dutch chronically ill patients	intern	PH
Schrijvers, A.J.P.	RIO: Evaluation of the indication for home care and the functioning of the involved institutions	intern	PH
Vacancy	Research collaboration in primary care (ZOM, Almere)	intern	CE
Villevoeye, D.P.J.	Cooperation between preventive and interventive MDs in treatment of patients with persistent health problems	extern	PH

## Research Services

### *Projects 2002 finished*

<i>Name</i>	<i>Title</i>	<i>Type</i> <sup>*2</sup>
research services	FINESSE: The benefits of dietary phyto-oestrogen intake with respect to cardiovascular disease, fracture risk, ability to perform activities of daily life, well-being and cognitive function	phase III CT
research services	OPAL: effects of tibolone (ORG OD-14) and continuous combined conjugated equine estrogens plus medrox yprogesterone acetate on intimal-medial thickness in postmenopausal women	phase III CT

### *Projects, ongoing*

<i>Organisation</i>	<i>Title</i>	
research services	ADREM: ADVANCE Retinal Measurements Study <sup>*see also VIC</sup>	phase III CT
research services	ADVANCE: Action in Diabetes and Vascular disease; pretax and Diamicon MR Controlled Evaluation	phase III CT
research services	ARTI II: Antibiotics in Respiratory Tract infections	other
research services	CAMELIA: Cardiovascular Riskprofile and Age at Menopause using Level of Ankle-Arm Index as measure for Atherosclerosis	other
research services	CIRA: Study on chronic hepatitis-C treatment with interferon alpha, ribavirin and amantadine	phase III CT
research services	EUFEST: The European First Episode Schizophrenia Trial	phase III CT
research services	EUROPA: European trial on Reduction Of Cardiac events with Perindopril in stable coronary Artery disease	phase III CT
research services	FOLLOW-PACE: complications in first year after pacemaker implants	other
research services	HAMLET: Hormonal (change) in the ageing male: An epidemiological taskforce	other
research services	INIA: Insulinotherapy and measure of atherosclerosis	other
research services	Leidsche Rijn Health Care Project	other
research services	LIFT: Long term Intervention of Fractures with Tibolone	phase III CT
research services	LIPHA: LM4156 administered orally once daily for 28 days (400 and 800 mg) in patients with type 2 diabetes and dyslipidaemia	phase III CT
research services	METEOR: Effects on intima media thickness: an evaluation of Rosuvastatin 4 mg	phase III CT
research services	NATAN: Tonsillectomy and adenoidectomy in The Netherlands	phase III CT
research services	NAVIGATOR: Efficacy and safety of long term administration of nateglinide and valsartan in the prevention of diabetes and cardiovascular outcome...	phase III CT
research services	PERFECT: Perindopril-Function of the Endothelium in Coronary artery disease Trial	phase III CT
research services	PLUTO study: UVB light therapy at home versus in the hospital	phase III CT
research services	The Dutch ADDITION Study; As part of the Anglo-Danish-Dutch study of intensive treatment in people with screen detected diabetes in primary care (ADDITION-studie)	phase III CT

<sup>2</sup> Type: phase III CT=(multicenter) (inter)national phase III clinical trial  
other= other projects

## Vascular Imaging Center (VIC)

<i>Projects, ongoing</i>		
<i>Organisation</i>	<i>Title</i>	<i>Type<sup>3</sup></i>
Vascular Imaging Center (VIC)	Adrem: ADVANCE Retinal Measurements, a large sub-study of ADVANCE on diabetic retinopathy and vascular retinal changes	phase III CT
Vascular Imaging Center (VIC)	Measurement of aortic pulse wave velocity in a single center cross sectional study among 400 healthy postmenopausal women to evaluate the role of endogenous estrogens on aortic stiffness	other
Vascular Imaging Center (VIC)	Measurement of carotid distensibility in a single center randomised double blind placebo controlled trial on the 3 year effect of increased folate intake	phase III CT
Vascular Imaging Center (VIC)	Measurement of carotid intima-media thickness and aortic pulse wave velocity in a cross-sectional study on endogenous hormones and vascular characteristics among middle aged 400 men	other
Vascular Imaging Center (VIC)	Measurement of carotid intima-media thickness and carotid distensibility in a cross-sectional study on systemic stiffness	other
Vascular Imaging Center (VIC)	Measurement of carotid intima-media thickness and distensibility in a single center cross-sectional study on the relation with endogenous hormones in elderly men	other
Vascular Imaging Center (VIC)	Measurement of carotid intima-media thickness and distensibility in a single center cohort study on the effects of endogenous hormones and inflammation on change in carotid intima-media thickness and in carotid distensibility in 400 frail old men	other
Vascular Imaging Center (VIC)	Measurement of carotid intima-media thickness in a cross sectional study on determinants of CIMT in subjects with chronic renal insufficiency	other
Vascular Imaging Center (VIC)	Measurement of carotid intima-media thickness in a multi centre randomised controlled trial on lipid lowering on progression of carotid intima-media thickness	phase III CT
Vascular Imaging Center (VIC)	Measurement of carotid intima-media thickness in a randomized, placebo-controlled double-blind trial on the effect of Tibolone and CEE/MPA on 3 year progression of CIMT	phase III CT
Vascular Imaging Center (VIC)	Measurement of carotid intima-media thickness in a randomized, placebo-controlled double-blind trial on the effect of roasvastatin on progression of CIMT	phase III CT
Vascular Imaging Center (VIC)	Measurement of carotid intima-media thickness in a single center randomised double blind placebo controlled trial that aims at studying the effects of increased folate intake during three years	phase III CT
Vascular Imaging Center (VIC)	Measurement of carotid intima-media thickness, endothelial function, pulse wave velocity in 750 adults as part of a study on early determinants of cardiovascular risk	other
Vascular Imaging Center (VIC)	Measurement of endothelial function in a double-blind, randomized, placebo controlled study on the effect of torvastatine 10 mg and 80 mg on endothelial function type II diabetics	phase III CT
Vascular Imaging Center (VIC)	Measurement of endothelial function in a randomised controlled trial on the effect of welding fumes on endothelial function	phase III CT

<sup>3</sup> Type: phase III CT=(multicenter) (inter)national phase III clinical trial  
other= other projects

Vascular Imaging Center (VIC)	Measurement of endothelial function in a randomised, double-blind, placebo-controlled study on the effects of three months treatment of tibolone and CEE/MPA on endothelial function	phase III CT
Vascular Imaging Center (VIC)	Measurement of endothelial function in a single center cross-sectional study of 100 post menopausal women aged 65-75 years	other
Vascular Imaging Center (VIC)	Measurement of endothelial function in a single center randomised placebo controlled trial on the effects of dietary phyto-oestrogen intake on endothelial function in 200 post menopausal women	phase III CT
Vascular Imaging Center (VIC)	Measurement of endothelial function in a single center randomised placebo controlled trial on the effect of SPE on 12 months change in endothelial function in 180 healthy men and women, 30-65 yrs	phase III CT
Vascular Imaging Center (VIC)	Measurement of endothelial function in a trial on the Effect of lowering of plasma homocysteine after an oral methionine load on endothelial function in healthy volunteers	phase III CT
Vascular Imaging Center (VIC)	Measurements of carotid intima-media thickness in the Insuline injections and atherosclerosis (INIA) study of exposure to insulin on carotid intima-media thickness and carotid arterial stiffness	other
Vascular Imaging Center (VIC)	Measurements of endothelial function in a randomised controlled trial on the effects of Perindopril on endothelial function in 288 patients with coronary heart disease	phase III CT
Vascular Imaging Center (VIC)	Training and quality control aspects of carotid intima-media thickness measurements in the AGES study in Reijkjavik, Iceland	other
Vascular Imaging Center (VIC)	Training of carotid intima-media thickness measurements in a randomised controlled trial on lipid lowering on progression of carotid intima-media thickness	phase III CT
Vascular Imaging Center (VIC)	Training of carotid ultrasound examinations to obtain reliable images for determination of carotid intima-media thickness or endothelial function	other

## PUBLICATIONS (2002)

### PhD-theses

1. Bleeker SE. Children with fever without aparent source: diagnosis and dilemmas. *PhD-Thesis Erasmus University Rotterdam*, 11-9-2002, Supervisors: de Groot R, Grobbee DE, Co-supervisors: Moll HA, Moons KGM.
2. Bloemenkamp DGM. Infections and peripheral arterial disease in young women. *PhD-Thesis Utrecht University*, 31-5-2002, Supervisors: van der Graaf Y, Mali WPTM, Co-supervisor: Visseren FLJ.
3. Bouvy ML. Drug therapy in heart failure:studies on prescribing drug induced problems and compliance. *PhD-Thesis Utrecht University*, 18-3-2002, Supervisors: Leufkens HGM, Hoes AW.
4. Brouwer DH. Assessment of occupational exposure to pesticides in Dutch bulb culture and glasshouse horticulture. *PhD-Thesis Utrecht University*, 11-3-2002, Supervisors: Brunekreef B, Co-supervisors: Heederik DJJ, van Hemmen JJ.
5. de Meer G. Airway responsiveness to direct and indirect stimuli A population based approach. *PhD-Thesis Utrecht University*, 27-5-2002, Supervisors: Brunekreef B, Postma DS, Co-supervisors: Heederik DJJ.
6. Dijkstra K. Prediction of spontaneous preterm birth. *PhD-Thesis Utrecht University*, 28-5-2002, Supervisors: Visser GHA, Verheij TJM.
7. Erkens JA. Pharmacotherapy in type 2 diabetes mellitus patients: beyond glycaemic control. *PhD-Thesis Utrecht University*, 21-5-2002, Supervisors: Leufkens HGM, Grobbee DE, Co-supervisors: Klungel O, Stolk RP.
8. Geubels E. Prevention of surgical site infections. *PhD-Thesis Utrecht University*, 29-10-2002, Supervisors: Grobbee DE, Vandenbroucke CMJE.
9. Hoogwerf LJR. Innovation and change in a rehabilitation unit for the elderly through action research. *PhD-Thesis Utrecht University*, 17-12-2002, Supervisors: Grypdonck MHF, Co-supervisors: van Dijkum C.
10. Jedeloo S. Quality of needs assessment and the provision of assistive devices and services for people with a functional disability. *PhD-Thesis Utrecht University*, 8-5-2002. Supervisors: Schrijvers AJP, Co-supervisors: de Witte LP.
11. Keinan-Boker L. Phytoestrogens and breast cancer. *PhD-Thesis Utrecht University*, 12-11-2002. Supervisors: Grobbee DE, Co-supervisors: Peeters PHM.
12. Koopman LP. Risk factors for the development of atopic disease in infancy and early childhood. *PhD-Thesis Erasmus University Rotterdam*, 28-2-2002, Supervisors: Heijens HJ, Brunekreef B.
13. Nederkoorn PJ. Non-invasive imaging of carotid artery stenosis. *PhD-Thesis Utrecht University*, 14-6-2002, Supervisors: van der Graaf Y, Hunink MGM, Mali WPTM.
14. Oren A. Young adults and their arteries Studies on development of vascular damage. *PhD-Thesis Utrecht University*, 14-11-2002, Supervisors: Grobbee DE, Co-supervisors: Bots ML.
15. Ossewaarde ME. Estrogens and cardiovascular disease: studies on risk and risk factors in postmenopausal women. *PhD-Thesis Utrecht University*, 8-2-2002 Supervisors: Grobbee DE, Co-supervisors: Bots ML, van der Schouw Y.
16. Pijnappel RM. Diagnosis of nonpalpable breast lesions. *PhD-Thesis Utrecht University*, 17-5-2002, Supervisors: Mali WPTM, Holland R, Co-supervisors: Peeters PHM.
17. Rosendal H. Comparative cohort studies in transmural care Three cases of structurally embedded practice in the Netherlands. *PhD-Thesis Utrecht University*, 24-9-2002. Supervisors: Schrijvers AJP, Co-supervisors: Beekun WT, de Witte LP.
18. Spoelstra JA . Type2 diabetes mellitus treatment strategies in primary care: Utrecht Diabetes Epidemiology Studies. *PhD-Thesis Utrecht University*, 6-11-2002. Supervisors: Grobbee DE, Leufkens HGM, Co-supervisors: Stolk RP, Klungel O.
19. van den Bosch MAAJ. Peripheral arterial occlusive disease in young women. *PhD-Thesis Utrecht University*, 22-1-2002, Supervisors: van der Graaf Y, Mali WPTM.
20. van den Hof S. Sero-epidemiology of maesles mumps and rubella in the Netherlands. *PhD-Thesis Utrecht University*, 6-12-2002, Supervisors: Grobbee DE, Co-supervisors: Conijn-van Spaenendonk MAE, de Melker HE.
21. van der Hel OL. Gene-environment interaction in breast and colorectal cancer risk. *PhD-Thesis Utrecht University*, 6-12-2002, Supervisors: Grobbee DE, Co-supervisors: Peeters PHM, Bueno de Mesquita HB.
22. van Dijk D. Outcomes after off-pump coronary bypass surgery. *PhD-Thesis Utrecht University*, 22-10-2002. Supervisors: Kalkman CJ, Grobbee DE, Co-supervisors: de Jaegere PPT.
23. van Klei WA. Preoperative evaluation Risk management and implementation aspects, *PhD-Thesis Utrecht University*, 16-4-2002, Supervisors: Knape JTA, Grobbee DE, Co-Supervisors: Moons KGM, Rutten CLG.

24. van Strien RT. Of mite and man. Epidemiological studies on determinants and effects of exposure to housedust and mite allergens. *PhD-Thesis Utrecht University*, 29-1-2002, Supervisors: Brunekreef B.
25. van Venrooij FV. Metabolic aspects of lipid lowering therapy in patients with type 2 diabetes mellitus. *PhD-Thesis Utrecht University*, 1-3-2002, Supervisors: Erkelens DW, Co-supervisors: Banga JD, Stolk RP.
26. Weijnen CF. Helicobacter pylori infection and dyspepsia in primary care. Studies on diagnosis and guideline implementation. *PhD-Thesis Utrecht University*, 7-2-2002, Supervisors: Verheij TJM, Hoes AW, Co-supervisors: de Wit NJ, Numans ME.

### International publications -journal articles (international-refereed)

1. Agudo A, Slimani N, Ocke MC, Naska A, Miller AB, Kroke A, Bamia C, Karalis D, Vineis P, Palli D, Bueno-De-Mesquita HB, Peeters PH, Engeset D, Hjartaker A, Navarro C, Martinez GC, Wallstrom P, Zhang JX, Welch AA, Spencer E, Stripp C, Overvad K, Clavel-Chapelon F, Casagrande C, Riboli E. Consumption of vegetables, fruit and other plant foods in the European Prospective Investigation into Cancer and Nutrition (EPIC) cohorts from 10 European countries. *Public Health Nutr* 2002;5:1179-1196.
2. Antithrombotic Trialists' Collaboration, (Algra A collaborator). Collaborative meta-analysis of randomised trials of antiplatelet therapy for prevention of death, myocardial infarction, and stroke in high risk patients. *BMJ* 2002;324:71-86.
3. Anyo G, Brunekreef B, de Meer G, Aarts F, Janssen NA, Van Vliet P. Early, current and past pet ownership: associations with sensitization, bronchial responsiveness and allergic symptoms in school children. *Clin Exp Allergy* 2002;32:361-366.
4. Bakker J, De Kort GA, Lo R, Van Gils AP, Hene RJ, Lock TM, Burger H, Beek FJ. MR urography for the preoperative evaluation of living renal donors. *Eur Radiol* 2002;12:2021-2029.
5. Bergman GJ, Winters JC, van der Heijden GJ, Postema K, Meyboom-de Jong B. Groningen Manipulation Study. The effect of manipulation of the structures of the shoulder girdle as additional treatment for symptom relief and for prevention of chronicity or recurrence of shoulder symptoms. Design of a randomized controlled trial within a comprehensive prognostic cohort study. *J Manipulative Physiol Ther* 2002;25:543-549.
6. Berk-Planken I, de Konig I, Stolk R, Jansen H, Hoogerbrugge N. Atorvastatin, diabetic dyslipidemia, and cognitive functioning. *Diabetes Care* 2002;25:1250-1251.
7. Beutels P, Edmunds WJ, Antonanzas F, De Wit GA, Evans D, Feilden R, Fendrick AM, Ginsberg GM, Glick HA, Mast E, Pechevis M, Van Doorslaer EK, van Hout BA. Economic evaluation of vaccination programmes: a consensus statement focusing on viral hepatitis. *Pharmacoeconomics* 2002;20:1-7.
8. Biemans JM, Van Heeswijk JP, van der Graaf Y. Digital chest imaging: selenium radiography versus storage phosphor imaging. Comparison of visualization of specific anatomic regions of the chest. *Invest Radiol* 2002;37:47-51.
9. Bloemenkamp DG, Mali WP, Tanis BC, Rosendaal FR, van den Bosch MA, Kemmeren JM, Algra A, Visseren FL, van der Graaf Y. The relation between Helicobacter pylori and atherosclerosis cannot be explained by a high homocysteine concentration. *Eur J Clin Invest* 2002;32:549-555.
10. Bloemenkamp DG, Mali WP, Tanis BC, Rosendaal FR, van den Bosch MA, Kemmeren JM, Algra A, Ossewaarde JM, Visseren FL, van Loon AM, van der Graaf Y. Chlamydia pneumoniae, Helicobacter pylori and cytomegalovirus infections and the risk of peripheral arterial disease in young women. *Atherosclerosis* 2002;163:149-156.
11. Bloemenkamp DG, van den Bosch MA, Mali WP, Tanis BC, Rosendaal FR, Kemmeren JM, Algra A, Visseren FL, van der Graaf Y. Novel risk factors for peripheral arterial disease in young women. *Am J Med* 2002;113:462-467.
12. Boeije HR, Duijnste MS, Grypdonck MH, Pool A. Encountering the downward phase: biographical work in people with multiple sclerosis living at home. *Soc Sci Med* 2002;55:881-893.
13. Boker LK, Merrick J. Cancer incidence in persons with Down syndrome in Israel. *Downs Syndr Res Pract* 2002;8:31-36.
14. Boker LK, van der Schouw YT, De kleijn MJ, Jacques PF, Grobbee DE, Peeters PH. Intake of dietary phytoestrogens by Dutch women. *J Nutr* 2002;132:1319-1328.
15. Bonneux L. How to measure the burden of mortality? *J Epidemiol Community Health* 2002;56:128-131.
16. Bots ML, Dijk JM, Oren A, Grobbee DE. Carotid intima-media thickness, arterial stiffness and risk of cardiovascular disease: current evidence. *J Hypertens* 2002;20:2317-2325.
17. Bots ML, Elwood PC, Nikitin Y, Salonen JT, Freire dC, Inzitari D, Sivenius J, Benetou V, Tuomilehto J, Koudstaal PJ, Grobbee DE. Total and HDL cholesterol and risk of stroke. EUROSTROKE: a collaborative study among research centres in Europe. *J Epidemiol Community Health* 2002;56 Suppl 1:i19-i24.



18. Bots ML, Elwood PC, Nikitin Y, Salonen JT, Freire dC, Inzitari D, Sivenius J, Trichopoulos A, Tuomilehto J, Koudstaal PJ, Grobbee DE. The EUROSTROCE cohorts: a short description and data analytical approach. *J Epidemiol Community Health* 2002;56 Suppl 1:i2-i7.
19. Bots ML, Elwood PC, Salonen JT, Freire dC, Sivenius J, Di Carlo A, Nikitin Y, Benetou V, Tuomilehto J, Koudstaal PJ, Grobbee DE. Level of fibrinogen and risk of fatal and non-fatal stroke. EUROSTROCE: a collaborative study among research centres in Europe. *J Epidemiol Community Health* 2002;56 Suppl 1:i14-i18.
20. Bots ML, Grobbee DE. Intima-media thickness as a surrogate marker for generalised atherosclerosis. *Cardiovasc Drugs Ther* 2002;16:341-351.
21. Bots ML, Nikitin Y, Salonen JT, Elwood PC, Malyutina S, Freire dC, Sivenius J, Di Carlo A, Lagiou P, Tuomilehto J, Koudstaal PJ, Grobbee DE. Left ventricular hypertrophy and risk of fatal and non-fatal stroke. EUROSTROCE: a collaborative study among research centres in Europe. *J Epidemiol Community Health* 2002;56 Suppl 1:i8-13.
22. Bots ML, Remme WJ, Luscher TF, Grobbee DE. PERindopril-Function of the Endothelium in Coronary Artery Disease Trial: The PERFECT Study-Sub Study of EUROPA: Rationale and Design. *Cardiovasc Drugs Ther* 2002;16:227-236.
23. Bots ML, Salonen JT, Elwood PC, Nikitin Y, Freire dC, Inzitari D, Sivenius J, Trichopoulos A, Tuomilehto J, Koudstaal PJ, Grobbee DE. Gamma-glutamyltransferase and risk of stroke: the EUROSTROCE project. *J Epidemiol Community Health* 2002;56 Suppl 1:i25-i29.
24. Bots ML. The Eurostroke Project. *J Epidemiol Community Health* 2002;56 Suppl 1:i1.
25. Bouvy ML, Heerdink ER, Hoes AW, Leufkens HG. Amiodarone-induced thyroid dysfunction associated with cumulative dose. *Pharmacoepidemiol Drug Saf* 2002;11:601-606.
26. Brauer M, Hoek G, Van Vliet P, Meliefste K, Fischer PH, Wijga A, Koopman LP, Neijens HJ, Gerritsen J, Kerkhof M, Heinrich J, Bellander T, Brunekreef B. Air pollution from traffic and the development of respiratory infections and asthmatic and allergic symptoms in children. *Am J Respir Crit Care Med* 2002;166:1092-1098.
27. Brilstra EH, Algra A, Rinkel GJ, Tulleken CA, Van Gijn J. Effectiveness of neurosurgical clip application in patients with aneurysmal subarachnoid hemorrhage. *J Neurosurg* 2002;97:1036-1041.
28. Brilstra EH, Rinkel GJ, Klijn CJ, van der Zwan A, Algra A, Lo RT, Tulleken CA. Excimer laser-assisted bypass in aneurysm treatment: short-term outcomes. *J Neurosurg* 2002;97:1029-1035.
29. Brunekreef B, Holgate ST. Air pollution and health. *Lancet* 2002;360:1233-1242.
30. Brunekreef B, Smit HA, de Jongste JC, Neijens HJ, Gerritsen J, Postma D, Aalberse R, Koopman LP, Kerkhof M, Wijga A, Van Strien RT. The Prevention and Incidence of Asthma and Mite Allergy (PIAMA) birth cohort study: Design and first results. *Pediatr Allergy Immunol* 2002;13:55-60.
31. Chin APM, de Jong N, Schouten EG, Van Staveren WA, Kok FJ. Physical exercise or micronutrient supplementation for the wellbeing of the frail elderly? A randomised controlled trial. *Br J Sports Med* 2002;36:126-131.
32. de Borst GJ, Tangelder MJ, Algra A, Lawson JA, Banga JD, Eikelboom BC, van der Vliet JA. The influence of hyperhomocysteinemia on graft patency after infrainguinal bypass surgery in the Dutch BOA Study. *J Vasc Surg* 2002;36:336-340.
33. De Bruin ML, Panneman MJ, Leufkens HG, Hoes AW, Herings RM. Use of cisapride with contraindicated drugs in The Netherlands. *Ann Pharmacother* 2002;36:338-343.
34. De Bruin ML, van Puijenbroek EP, Egberts AC, Hoes AW, Leufkens HG. Non-sedating antihistamine drugs and cardiac arrhythmias -- biased risk estimates from spontaneous reporting systems? *Br J Clin Pharmacol* 2002;53:370-374.
35. de Gans K, Nieuwkamp DJ, Rinkel GJ, Algra A. Timing of aneurysm surgery in subarachnoid hemorrhage: a systematic review of the literature. *Neurosurgery* 2002;50:336-340.
36. De Groot CP, Van Staveren WA. Energy balance and malnutrition in institutionalized elderly people. *J Nutr Health Aging* 2002;6:311-313.
37. De Groot CP, Van Staveren WA. Undernutrition in the European SENECA studies. *Clin Geriatr Med* 2002;18:699-708, vi.
38. de Jong MH, Scharp-van der Linden VT, Aalberse R, Heymans HS, Brunekreef B. The effect of brief neonatal exposure to cows' milk on atopic symptoms up to age 5. *Arch Dis Child* 2002;86:365-369.
39. De kleijn MJ, van der Schouw YT, Verbeek AL, Peeters PH, Banga JD, van der Graaf Y. Endogenous estrogen exposure and cardiovascular mortality risk in postmenopausal women. *Am J Epidemiol* 2002;155:339-345.
40. De kleijn MJ, van der Schouw YT, Wilson PW, Grobbee DE, Jacques PF. Dietary intake of phytoestrogens is associated with a favorable metabolic cardiovascular risk profile in postmenopausal U.S. women: the Framingham study. *J Nutr* 2002;132:276-282.

41. de Kort LM, Klijn AJ, Uiterwaal CS, de Jong TP. Ureteral reimplantation in infants and children: effect on bladder function. *J Urol* 2002;167:285-287.
42. de Roos NM, Schouten EG, Scheek LM, van Tol A, Katan MB. Replacement of dietary saturated fat with trans fat reduces serum paraoxonase activity in healthy men and women. *Metabolism* 2002;51:1534-1537.
43. de Roos NM, Siebelink E, Bots ML, van Tol A, Schouten EG, Katan MB. Trans monounsaturated fatty acids and saturated fatty acids have similar effects on postprandial flow-mediated vasodilation. *Eur J Clin Nutr* 2002;56:674-679.
44. Diephuis JC, Balt J, van Dijk D, Moons KG, Knappe JT. Effect of rewarming speed during hypothermic cardiopulmonary bypass on cerebral pressure-flow relation. *Acta Anaesthesiol Scand* 2002;46:283-288.
45. Diercks GF, Hillege HL, van Boven AJ, Kors JA, Crijs HJ, Grobbee DE, de Jong PE, van Gilst WH. Microalbuminuria modifies the mortality risk associated with electrocardiographic ST-T segment changes. *J Am Coll Cardiol* 2002;40:1401.
46. Engelhart MJ, Geerlings MI, Ruitenberg A, Van Swieten JC, Hofman A, Witteman JC, Breteler MM. Diet and risk of dementia: Does fat matter?: The Rotterdam Study. *Neurology* 2002;59:1915-1921.
47. Engelhart MJ, Geerlings MI, Ruitenberg A, Van Swieten JC, Hofman A, Witteman JC, Breteler MM. Dietary intake of antioxidants and risk of Alzheimer disease. *JAMA* 2002;287:3223-3229.
48. Erkens JA, Herings RM, Stolk RP, Spoelstra JA, Grobbee DE, Leufkens HG. Cardiovascular risk factors and diseases precede oral hypoglycaemic therapy in patients with type 2 diabetes mellitus. *J Clin Epidemiol* 2002;55:345-349.
49. Erkens JA, Klungel OH, Herings RM, Stolk RP, Spoelstra JA, Grobbee DE, Leufkens HG. Use of fluorquinolones is associated with a reduced risk of coronary heart disease in diabetes mellitus type 2 patients. *Eur Heart J* 2002;23:1575-1579.
50. Feenstra J, Heerdink ER, Grobbee DE, Stricker BH. Association of nonsteroidal anti-inflammatory drugs with first occurrence of heart failure and with relapsing heart failure: the Rotterdam Study. *Arch Intern Med* 2002;162:265-270.
51. Fischer K, Astermark J, van der Bom JG, Ljung R, Berntorp E, Grobbee DE, van den Berg HM. Prophylactic treatment for severe haemophilia: comparison of an intermediate-dose to a high-dose regimen. *Haemophilia* 2002;8:753-760.
52. Fischer K, van der Bom JG, Mauser-Bunschoten EP, Roosendaal G, Prejs R, De Kleijn P, Grobbee DE, van den Berg M. The effects of postponing prophylactic treatment on long-term outcome in patients with severe hemophilia. *Blood* 2002;99:2337-2341.
53. Fischer K, van der Bom JG, Molho P, Negrier C, Mauser-Bunschoten EP, Roosendaal G, De Kleijn P, Grobbee DE, van den Berg HM. Prophylactic versus on-demand treatment strategies for severe haemophilia: a comparison of costs and long-term outcome. *Haemophilia* 2002;8:745-752.
54. Fischer K, van Hout BA, van der Bom JG, Grobbee DE, van den Berg HM. Association between joint bleeds and Petterson scores in severe haemophilia. *Acta Radiol* 2002;43:528-532.
55. Gallas PR, Stolk RP, Bakker K, Endert E, Wiersinga WM. Thyroid dysfunction during pregnancy and in the first postpartum year in women with diabetes mellitus type 1. *Eur J Endocrinol* 2002;147:443-451.
56. Gates PC, Eliasziw M, Algra A, Barnett HJ, Gunton RW. Identifying patients with symptomatic carotid artery disease at high and low risk of severe myocardial infarction and cardiac death. *Stroke* 2002;33:2413-2416.
57. Gehring U, Cyrus J, Sedlmeir G, Brunekreef B, Bellander T, Fischer P, Bauer CP, Reinhardt D, Wichmann HE, Heinrich J. Traffic-related air pollution and respiratory health during the first 2 yrs of life. *Eur Respir J* 2002;19:690-698.
58. Geleijnse JM, Giltay EJ, Grobbee DE, Donders AR, Kok FJ. Blood pressure response to fish oil supplementation: metaregression analysis of randomized trials. *J Hypertens* 2002;20:1493-1499.
59. Geleijnse JM, Grobbee DE. High salt intake early in life: does it increase the risk of hypertension? *J Hypertens* 2002;20:2121-2124.
60. Georges JJ, Grypdonck M, Dierckx de Casterle. Being a palliative care nurse in an academic hospital: a qualitative study about nurses' perceptions of palliative care nursing. *J Clin Nurs* 2002;11:785-793.
61. Georges JJ, Grypdonck M. Moral problems experienced by nurses when caring for terminally ill people: a literature review. *Nurs Ethics* 2002;9:155-178.
62. Haftenberger M, Lahmann PH, Panico S, Gonzalez CA, Seidell JC, Boeing H, Giurdanella MC, Krogh V, Bueno-De-Mesquita HB, Peeters PH, Skeie G, Hjartaker A, Rodriguez M, Quiros JR, Berglund G, Janlert U, Khaw KT, Spencer EA, Overvad K, Tjonneland A, Clavel-Chapelon F, Tehard B, Miller AB, Klipstein-Grobusch K, Benetou V, Kiriazi G, Riboli E, Slimani N. Overweight, obesity and fat distribution in 50- to 64-year-old participants in the European Prospective Investigation into Cancer and Nutrition (EPIC). *Public Health Nutr* 2002;5:1147-1162.
63. Haftenberger M, Schuit AJ, Tormo MJ, Boeing H, Wareham N, Bueno-De-Mesquita HB, Kumle M, Hjartaker A, Chirlaque MD, Ardanaz E, Andren C, Lindahl B, Peeters PH, Allen NE, Overvad K,

- Tjonneland A, Clavel-Chapelon F, Linseisen J, Bergmann MM, Trichopoulos A, Lagiou P, Salvini S, Panico S, Riboli E, Ferrari P, Slimani N. Physical activity of subjects aged 50-64 years involved in the European Prospective Investigation into Cancer and Nutrition (EPIC). *Public Health Nutr* 2002;5:1163-1176.
64. Hak AE, Witteman JC, De Jong FH, Geerlings MI, Hofman A, Pols HA. Low levels of endogenous androgens increase the risk of atherosclerosis in elderly men: the Rotterdam study. *J Clin Endocrinol Metab* 2002;87:3632-3639.
  65. Hak E, Hoes AW, Verheij TJ. Influenza vaccinations: who needs them and when? *Drugs* 2002;62:2413-2420.
  66. Hak E, Nordin J, Wei F, Mullooly J, Poblete S, Strikas R, Nichol KL. Influence of high-risk medical conditions on the effectiveness of influenza vaccination among elderly members of 3 large managed-care organizations. *Clin Infect Dis* 2002;35:370-377.
  67. Hak E, Verheij TJ, Grobbee DE, Nichol KL, Hoes AW. Confounding by indication in non-experimental evaluation of vaccine effectiveness: the example of prevention of influenza complications. *J Epidemiol Community Health* 2002;56:951-955.
  68. Haveman-Nies A, de Groot LP, Burema J, Cruz JA, Osler M, Van Staveren WA. Dietary quality and lifestyle factors in relation to 10-year mortality in older Europeans: the SENECA study. *Am J Epidemiol* 2002;156:962-968.
  69. Hillege HL, Fidler V, Diercks GF, van Gilst WH, de Zeeuw D, van Veldhuisen DJ, Gans RO, Janssen WM, Grobbee DE, de Jong PE. Urinary albumin excretion predicts cardiovascular and noncardiovascular mortality in general population. *Circulation* 2002;106:1777-1782.
  70. Hjartaker A, Lagiou A, Slimani N, Lund E, Chirlaque MD, Vasilopoulou E, Zavitsanos X, Berrino F, Sacerdote C, Ocke MC, Peeters PH, Engeset D, Skeie G, Aller A, Amiano P, Berglund G, Nilsson S, McTaggart A, Spencer EA, Overvad K, Tjonneland A, Clavel-Chapelon F, Linseisen J, Schulz M, Hemon B, Riboli E. Consumption of dairy products in the European Prospective Investigation into Cancer and Nutrition (EPIC) cohort: data from 35 955 24-hour dietary recalls in 10 European countries. *Public Health Nutr* 2002;5:1259-1271.
  71. Hoek G, Brunekreef B, Goldbohm S, Fischer P, van den Brandt PA. Association between mortality and indicators of traffic-related air pollution in the Netherlands: a cohort study. *Lancet* 2002;360:1203-1209.
  72. Hoek G, Meliefste K, Cyrus J, Lewne M, Bellander T, Brauer M, Fischer P, Gehring U, Heinrich J, Van Vliet P, Brunekreef B. Spatial variability of fine particle concentrations in three European areas. *Atmosf Environ*. *Atmosf Environ* 2002;36:4077-4088.
  73. Hollander M, Bots ML, Del Sol AI, Koudstaal PJ, Witteman JC, Grobbee DE, Hofman A, Breteler MM. Carotid plaques increase the risk of stroke and subtypes of cerebral infarction in asymptomatic elderly: the Rotterdam study. *Circulation* 2002;105:2872-2877.
  74. Hoorntje LE, Peeters PH, Borel Rinkes I, Verkooijen HM, Pijnappel RM, Mali WP. Stereotactic large core needle biopsy for all nonpalpable breast lesions? *Breast Cancer Res Treat* 2002;73:177-182.
  75. Hulsman RL, Ros WJ, Winnubst JA, Bensing JM. The effectiveness of a computer-assisted instruction programme on communication skills of medical specialists in oncology. *Med Educ* 2002;36:125-134.
  76. Iestra JA, Fibbe WE, Zwinderman AH, Van Staveren WA, Kromhout D. Body weight recovery, eating difficulties and compliance with dietary advice in the first year after stem cell transplantation: a prospective study. *Bone Marrow Transplant* 2002;29:417-424.
  77. Iglesias del Sol A, Bots ML, Grobbee DE, Hofman A, Witteman JC. Carotid intima-media thickness at different sites: relation to incident myocardial infarction; The Rotterdam Study. *Eur Heart J* 2002;23:934-940.
  78. Jaquet JB, Kalmijn S, Kuypers PD, Hofman A, Passchier J, Hovius SE. Early psychological stress after forearm nerve injuries: a predictor for long-term functional outcome and return to productivity. *Ann Plast Surg* 2002;49:82-90.
  79. Jedeloo S, De Witte L, Schrijvers G. A user-centred approach to assess the effectiveness of outdoor mobility devices and services. *Int J Rehabil Res* 2002;25:137-141.
  80. Jedeloo S, De Witte LP, Linssen BA, Schrijvers AJ. Client satisfaction with service delivery of assistive technology for outdoor mobility. *Disabil Rehabil* 2002;24:550-557.
  81. Jorg F, Boeije HR, Huijsman R, de Weert GH, Schrijvers AJ. Objectivity in needs assessment practice: admission to a residential home. *Health Soc Care Community* 2002;10:445-456.
  82. Kalmijn S, van Boxtel MP, Verschuren MW, Jolles J, Launer LJ. Cigarette smoking and alcohol consumption in relation to cognitive performance in middle age. *Am J Epidemiol* 2002;156:936-944.
  83. Kamphuis HC, de Leeuw JR, Derksen R, Hauer R, Winnubst JA. A 12-month quality of life assessment of cardiac arrest survivors treated with or without an implantable cardioverter defibrillator. *Europace* 2002;4:417-425.

84. Keinan-Boker L, Peeters PH, Mulligan AA, Navarro C, Slimani N, Mattisson I, Lundin E, McTaggart A, Allen NE, Overvad K, Tjonneland A, Clavel-Chapelon F, Linseisen J, Haftenberger M, Lagiou P, Kalapothaki V, Evangelista A, Frasca G, Bueno-De-Mesquita HB, van der Schouw YT, Engeset D, Skeie G, Tormo MJ, Ardanaz E, Charrondiere UR, Riboli E. Soy product consumption in 10 European countries: the European Prospective Investigation into Cancer and Nutrition (EPIC) study. *Public Health Nutr* 2002;5:1217-1226.
85. Kemmeren JM, Algra A, Meijers JC, Bouma BN, Grobbee DE. Effect of second- and third-generation oral contraceptives on fibrinolysis in the absence or presence of the factor V Leiden mutation. *Blood Coagul Fibrinolysis* 2002;13:373-381.
86. Kemmeren JM, Algra A, Meijers JC, Bouma BN, Grobbee DE. Effects of second and third generation oral contraceptives and their respective progestagens on the coagulation system in the absence or presence of the factor V Leiden mutation. *Thromb Haemost* 2002;87:199-205.
87. Kemmeren JM, Tanis BC, van den Bosch MA, Bollen EL, Helmerhorst FM, van der Graaf Y, Rosendaal FR, Algra A. Risk of Arterial Thrombosis in Relation to Oral Contraceptives (RATIO) study: oral contraceptives and the risk of ischemic stroke. *Stroke* 2002;33:1202-1208.
88. Klijn CJ, Kappelle LJ, van Schooneveld MJ, Hoppenreijns VP, Algra A, Tulleken CA, Van Gijn J. Venous stasis retinopathy in symptomatic carotid artery occlusion: prevalence, cause, and outcome. *Stroke* 2002;33:695-701.
89. Klipstein-Grobusch K, Slimani N, Krogh V, Keil U, Boeing H, Overvad K, Tjonneland A, Clavel-Chapelon F, Thiebaut A, Linseisen J, Schulze MB, Lagiou P, Papadimitrou A, Saieva C, Veglia F, Bueno-De-Mesquita HB, Peeters PH, Kumle M, Brustad M, Martinez GC, Barricarte A, Berglund G, Weinehall L, Mulligan A, Allen N, Ferrari P, Riboli E. Trends in self-reported past alcoholic beverage consumption and ethanol intake from 1950 to 1995 observed in eight European countries participating in the European Investigation into Cancer and Nutrition (EPIC). *Public Health Nutr* 2002;5:1297-1310.
90. Kneyber MC, Moons KG, de Groot R, Moll HA. Prediction of duration of hospitalization in respiratory syncytial virus infection. *Pediatr Pulmonol* 2002;33:453-457.
91. Koopman LP, Van Strien RT, Kerkhof M, Wijga A, Smit HA, De Jongste JC, Gerritsen J, Aalberse RC, Brunekreef B, Neijens HJ. Placebo-controlled trial of house dust mite-impermeable mattress covers: effect on symptoms in early childhood. *Am J Respir Crit Care Med* 2002;166:307-313.
92. Koopman LP, Wijga A, Smit HA, De Jongste JC, Kerkhof M, Gerritsen J, Vos AP, Van Strien RT, Brunekreef B, Neijens HJ. Early respiratory and skin symptoms in relation to ethnic background: the importance of socioeconomic status; the PIAMA study. *Arch Dis Child* 2002;87:482-488.
93. Kuyvenhoven MM, Gorter KJ, Zuithoff P, Budiman-Mak E, Conrad KJ, Post MW. The foot function index with verbal rating scales (FFI-5pt): A clinimetric evaluation and comparison with the original FFI. *J Rheumatol* 2002;29:1023-1028.
94. Lebrun CE, van der Schouw YT, Bak AA, De Jong FH, Pols HA, Grobbee DE, Lamberts SW, Bots ML. Arterial stiffness in postmenopausal women: determinants of pulse wave velocity. *J Hypertens* 2002;20:2165-2172.
95. Leonardi GS, Houthuijs D, Nikiforov B, Volf J, Rudnai P, Zejda J, Gurzau E, Fabianova E, Fletcher T, Brunekreef B. Respiratory symptoms, bronchitis and asthma in children of Central and Eastern Europe. *Eur Respir J* 2002;20:890-898.
96. Leurs PB, Stolk RP, Hamulyak K, Van Oerle R, Grobbee DE, Wolffenbutter BH. Tissue factor pathway inhibitor and other endothelium-dependent hemostatic factors in elderly individuals with normal or impaired glucose tolerance and type 2 diabetes. *Diabetes Care* 2002;25:1340-1345.
97. Linseisen J, Bergstrom E, Gafa L, Gonzalez CA, Thiebaut A, Trichopoulou A, Tumino R, Navarro SC, Martinez GC, Mattisson I, Nilsson S, Welch A, Spencer EA, Overvad K, Tjonneland A, Clavel-Chapelon F, Kesse E, Miller AB, Schulz M, Botsi K, Naska A, Sieri S, Sacerdote C, Ocke MC, Peeters PH, Skeie G, Engeset D, Charrondiere UR, Slimani N. Consumption of added fats and oils in the European Prospective Investigation into Cancer and Nutrition (EPIC) centres across 10 European countries as assessed by 24-hour dietary recalls. *Public Health Nutr* 2002;5:1227-1242.
98. Lusseveld E, Brilstra EH, Nijssen PC, van Rooij WJ, Sluzewski M, Tulleken CA, Wijnalda D, Schellens RL, van der Graaf Y, Rinkel GJ. Endovascular coiling versus neurosurgical clipping in patients with a ruptured basilar tip aneurysm. *J Neurol Neurosurg Psychiatry* 2002;73:591-593.
99. Marang-van de Mheen PJ, ten Asbroek AH, Bonneux L, Bonsel GJ, Klazinga NS. Cost-effectiveness of a family and DNA based screening programme on familial hypercholesterolaemia in The Netherlands. *Eur Heart J* 2002;23:1922-1930.
100. Meerwaldt R, Odink RJ, Landaeta R, Aarts F, Brunekreef B, Gerritsen J, Van Aalderen WM, Hoekstra MO. A lower prevalence of atopy symptoms in children with type 1 diabetes mellitus. *Clin Exp Allergy* 2002;32:254-255.

101. Meijer E, Grobbee DE, Heederik D. Detection of workers sensitised to high molecular weight allergens: a diagnostic study in laboratory animal workers. *Occup Environ Med* 2002;59:189-195.
102. Meijer WT, Cost B, Bernsen RM, Hoes AW. Incidence and management of intermittent claudication in primary care in The Netherlands. *Scand J Prim Health Care* 2002;20:33-34.
103. Moons KG, Bots ML, Salonen JT, Elwood PC, Freire dC, Nikitin Y, Sivenius J, Inzitari D, Benetou V, Tuomilehto J, Koudstaal PJ, Grobbee DE. Prediction of stroke in the general population in Europe (EUROSTROCE): Is there a role for fibrinogen and electrocardiography? *J Epidemiol Community Health* 2002;56 Suppl 1:i30-i36.
104. Moons KG, Grobbee DE. When should we remain blind and when should our eyes remain open in diagnostic studies? *J Clin Epidemiol* 2002;55:633-636.
105. Muller IS, de Grauw WJ, van Gerwen WH, Bartelink ML, van Den Hoogen HJ, Rutten GE. Foot ulceration and lower limb amputation in type 2 diabetic patients in dutch primary health care. *Diabetes Care* 2002;25:570-574.
106. Mwangi AM, den Hartog AP, Mwadime RK, Van Staveren WA, Foeken DW. Do street food vendors sell a sufficient variety of foods for a healthful diet? The case of Nairobi. *Food Nutr Bull* 2002;23:48-56.
107. Nederkoorn PJ, Elgersma OE, Mali WP, Eikelboom BC, Kappelle LJ, van der Graaf Y. Overestimation of carotid artery stenosis with magnetic resonance angiography compared with digital subtraction angiography. *J Vasc Surg* 2002;36:806-813.
108. Nederkoorn PJ, Mali WP, Eikelboom BC, Elgersma OE, Buskens E, Hunink MG, Kappelle LJ, Buijs PC, Wust AF, van der Lugt A, van der Graaf Y. Preoperative diagnosis of carotid artery stenosis: accuracy of noninvasive testing. *Stroke* 2002;33:2003-2008.
109. Nederkoorn PJ, van der Graaf Y, Eikelboom BC, van der LA, Bartels LW, Mali WP. Time-of-flight MR angiography of carotid artery stenosis: does a flow void represent severe stenosis? *AJNR Am J Neuroradiol* 2002;23:1779-1784.
110. Nicolle LE, Madsen KS, Debeek GO, Blochlinger E, Borrild N, Bru JP, Mckinnon C, O'Doherty B, Spiegel W, Van Balen FA, Menday P. Three days of pivmecillinam or norfloxacin for treatment of acute uncomplicated urinary infection in women. *Scand J Infect Dis* 2002;34:487-492.
111. Oostenbrink R, Maas M, Moons KG, Moll HA. Sequelae after bacterial meningitis in childhood. *Scand J Infect Dis* 2002;34:379-382.
112. Oostenbrink R, Moons KG, Derksen-Lubsen G, Grobbee DE, Moll HA. Early prediction of neurological sequelae or death after bacterial meningitis. *Acta Paediatr* 2002;91:391-398.
113. Oostenbrink R, Moons KG, Twijnstra MJ, Grobbee DE, Moll HA. Children with meningeal signs: predicting who needs empiric antibiotic treatment. *Arch Pediatr Adolesc Med* 2002;156:1189-1194.
114. Oostenbrink R, Oostenbrink JB, Moons KG, Derksen-Lubsen G, Essink-Bot ML, Grobbee DE, Redekop WK, Moll HA. Cost-utility analysis of patient care in children with meningeal signs. *Int J Technol Assess Health Care* 2002;18:485-496.
115. Oosthuizen H, Riedijk R, Nonner J, Rheeder P, Ker JA. An educational intervention to improve the quality of care of diabetic patients. *S Afr Med J* 2002;92:459-464.
116. Opstelten W, Mauritz JW, de Wit NJ, van Wijck AJ, Stalman WA, van essen GA. Herpes zoster and postherpetic neuralgia: incidence and risk indicators using a general practice research database. *Fam Pract* 2002;19:471-475.
117. Ostendorf M, Johnell O, Malchau H, Dhert WJ, Schrijvers AJ, Verbout AJ. The epidemiology of total hip replacement in The Netherlands and Sweden: present status and future needs. *Acta Orthop Scand* 2002;73:282-286.
118. Pasterkamp G, Algra A, Grobbee DE, de Jaegere PP, Banga JD, van der Graaf Y. Homocysteine and the stage of atherosclerotic disease: a study in patients suffering from clinically silent and clinically manifest atherosclerotic disease. *Eur J Clin Invest* 2002;32:309-315.
119. Peeters A, Mamun AA, Willekens F, Bonneux L. A cardiovascular life history. A life course analysis of the original Framingham Heart Study cohort. *Eur Heart J* 2002;23:458-466.
120. Pekkanen J, Peters A, Hoek G, Tiittanen P, Brunekreef B, de Hartog J, Heinrich J, Ibaldo-Mulli A, Kreyling WG, Lanki T, Timonen KL, Vanninen E. Particulate air pollution and risk of ST-segment depression during repeated submaximal exercise tests among subjects with coronary heart disease: the Exposure and Risk Assessment for Fine and Ultrafine Particles in Ambient Air (ULTRA) study. *Circulation* 2002;106:933-938.
121. Pijnappel RM, Peeters PH, van den Donk M, Holland R, Hendriks JH, Deurloo EE, Mali WP. Diagnostic strategies in non-palpable breast lesions. *Eur J Cancer* 2002;38:550-555.
122. Polder JJ, Bonneux L, Meerding WJ, van der Maas PJ. Age-specific increases in health care costs. *Eur J Public Health* 2002;12:57-62.
123. Polder JJ, Meerding WJ, Bonneux L, van der Maas PJ. Healthcare costs of intellectual disability in the Netherlands: a cost-of-illness perspective. *J Intellect Disabil Res* 2002;46:168-178.

124. Prinszen M, Buskens E, Blankensteijn JD. The Dutch Randomised Endovascular Aneurysm Management (DREAM) trial. Background, design and methods. *J Cardiovasc Surg (Torino)* 2002;43:379-384.
125. Quartero AO, Numans ME, Post MW, de Melker RA, de Wit NJ. One-year prognosis of primary care dyspepsia: predictive value of symptom pattern, Helicobacter pylori and GP management. *Eur J Gastroenterol Hepatol* 2002;14:55-60.
126. Redekop WK, Koopmanschap MA, Rutten GE, Wolffenbuttel BH, Stolk RP, Niessen LW. Resource consumption and costs in Dutch patients with type 2 diabetes mellitus. Results from 29 general practices. *Diabet Med* 2002;19:246-253.
127. Redekop WK, Koopmanschap MA, Stolk RP, Rutten GE, Wolffenbuttel BH, Niessen LW. Health-related quality of life and treatment satisfaction in Dutch patients with type 2 diabetes. *Diabetes Care* 2002;25:458-463.
128. Reijneveld JC, Te Boekhorst BC, Zonderland ML, Kalmijn S, Notermans NC. Response to exercise of patients with idiopathic hyper-CK-emia. *Muscle Nerve* 2002;26:832-837.
129. Rheeder P, Ker JA. What is wrong with my patient? How to read an article concerning diagnosis. *S Afr Med J* 2002;92:144-148.
130. Rheeder P, Stolk RP, Veenhouwer JF, Grobbée DE. The metabolic syndrome in black hypertensive women -waist circumference more strongly related than body mass index. *S Afr Med J* 2002;92:637-641.
131. Rheeder P, van Wyk JT, Hokken JW, Hueting HM. Monofilament assessment of neuropathy in a community diabetes clinic. *S Afr Med J* 2002;92:715-719.
132. Riboli E, Hunt KJ, Slimani N, Ferrari P, Norat T, Fahey M, Charrondiere UR, Hemon B, Casagrande C, Vignat J, Overvad K, Tjonneland A, Clavel-Chapelon F, Thiebaut A, Wahrendorf J, Boeing H, Trichopoulos D, Trichopoulou A, Vineis P, Palli D, Bueno-De-Mesquita HB, Peeters PH, Lund E, Engeset D, Gonzalez CA, Barricarte A, Berglund G, Hallmans G, Day NE, Key TJ, Kaaks R, Saracci R. European Prospective Investigation into Cancer and Nutrition (EPIC): study populations and data collection. *Public Health Nutr* 2002;5:1113-1124.
133. Rinkel GJ, Feigin VL, Algra A, Vermeulen M, Van Gijn J. Calcium antagonists for aneurysmal subarachnoid haemorrhage (Cochrane Review). *Cochrane Database Syst Rev* 2002;CD000277.
134. Rohrmann S, Linseisen J, Becker N, Norat T, Sinha R, Skeie G, Lund E, Martinez C, Barricarte A, Mattisson I, Berglund G, Welch A, Davey G, Overvad K, Tjonneland A, Clavel-Chapelon F, Kesse E, Lotze G, Klipstein-Grobusch K, Vasilopoulou E, Polychronopoulos E, Pala V, Celentano E, Bueno-De-Mesquita HB, Peeters PH, Riboli E, Slimani N. Cooking of meat and fish in Europe-results from the European Prospective Investigation into Cancer and Nutrition (EPIC). *Eur J Clin Nutr* 2002;56:1216-1230.
135. Roovers JP, van der Bom JG, van der Vaart CH, Schagen van Leeuwen JH, Heintz AP. Abdominal versus vaginal approach for the management of genital prolapse and coexisting stress incontinence. *Int Urogynecol J Pelvic Floor Dysfunct* 2002;13:224-231.
136. Schoonhoven L, Defloor T, Grypdonck MH. Incidence of pressure ulcers due to surgery. *J Clin Nurs* 2002;11:479-487.
137. Schoonhoven L, Defloor T, van dT, I, Buskens E, Grypdonck MH. Risk indicators for pressure ulcers during surgery. *Appl Nurs Res* 2002;15:163-173.
138. Schoonhoven L, Haalboom JR, Bousema MT, Algra A, Grobbée DE, Grypdonck MH, Buskens E. Prospective cohort study of routine use of risk assessment scales for prediction of pressure ulcers. *BMJ* 2002;325:797.
139. Selten JP, Bosman IJ, de Boer D, Veen ND, van der Graaf Y, Maes RA, Kahn RS. Hair analysis for cannabinoids and amphetamines in a psychosis incidence study. *Eur Neuropsychopharmacol* 2002;12:27-30.
140. Sieri S, Agudo A, Kesse E, Klipstein-Grobusch K, San Jose B, Welch AA, Krogh V, Luben R, Allen N, Overvad K, Tjonneland A, Clavel-Chapelon F, Thiebaut A, Miller AB, Boeing H, Kolyva M, Saieva C, Celentano E, Ocke MC, Peeters PH, Brustad M, Kumle M, Dorransoro M, Fernandez FA, Mattisson I, Weinehall L, Riboli E, Slimani N. Patterns of alcohol consumption in 10 European countries participating in the European Prospective Investigation into Cancer and Nutrition (EPIC) project. *Public Health Nutr* 2002;5:1287-1296.
141. Sierksma A, Van Der Gaag MS, Kluit C, Hendriks HF. Moderate alcohol consumption reduces plasma C-reactive protein and fibrinogen levels; a randomized, diet-controlled intervention study. *Eur J Clin Nutr* 2002;56:1130-1136.
142. Sierksma A, Van Der Gaag MS, van Tol A, James RW, Hendriks HF. Kinetics of HDL cholesterol and paraoxonase activity in moderate alcohol consumers. *Alcohol Clin Exp Res* 2002;26:1430-1435.
143. Slieker MG, Schilder AG, Uiterwaal CS, van der Ent CK. Children with cystic fibrosis: who should visit the otorhinolaryngologist? *Arch Otolaryngol Head Neck Surg* 2002;128:1245-1248.
144. Slimani N, Fahey M, Welch AA, Wirfalt E, Stripp C, Bergstrom E, Linseisen J, Schulze MB, Bamia C, Chloptsios Y, Veglia F, Panico S, Bueno-De-Mesquita HB, Ocke MC, Brustad M, Lund E, Gonzalez CA,

- Barcos A, Berglund G, Winkvist A, Mulligan A, Appleby P, Overvad K, Tjonneland A, Clavel-Chapelon F, Kesse E, Ferrari P, Van Staveren WA, Riboli E. Diversity of dietary patterns observed in the European Prospective Investigation into Cancer and Nutrition (EPIC) project. *Public Health Nutr* 2002;5:1311-1328.
145. Slimani N, Kaaks R, Ferrari P, Casagrande C, Clavel-Chapelon F, Lotze G, Kroke A, Trichopoulos D, Trichopoulou A, Lauria C, Bellegotti M, Ocke MC, Peeters PH, Engeset D, Lund E, Agudo A, Larranaga N, Mattisson I, Andren C, Johansson I, Davey G, Welch AA, Overvad K, Tjonneland A, Van Staveren WA, Saracci R, Riboli E. European Prospective Investigation into Cancer and Nutrition (EPIC) calibration study: rationale, design and population characteristics. *Public Health Nutr* 2002;5:1125-1145.
146. Smits AJ, Hak E, Stalman WA, van essen GA, Hoes AW, Verheij TJ. Clinical effectiveness of conventional influenza vaccination in asthmatic children. *Epidemiol Infect* 2002;128:205-211.
147. Smits HF, Smits JH, Wust AF, Buskens E, Blankestijn PJ. Percutaneous thrombolysis of thrombosed haemodialysis access grafts: comparison of three mechanical devices. *Nephrol Dial Transplant* 2002;17:467-473.
148. Smits JH, Bos C, Elgersma OE, van der Mark WA, Blankestijn PJ, Bakker CJ, Zijlstra JJ, Kalmijn S, Mali WP. Hemodialysis access imaging: comparison of flow-interrupted contrast-enhanced MR angiography and digital subtraction angiography. *Radiology* 2002;225:829-834.
149. Spoelstra JA, Stol RP, de Bruyne MC, Erkens JA, Herings RM, Leufkens HG, Grobbee DE. Factors associated with switching from oral hypoglycaemic agents to insulin therapy. *Neth J Med* 2002;60:243-248.
150. Stevenson J, Cornah D, Evrard P, Vanderheyden V, Billard C, Bax M, Van Hout A. Long-term evaluation of the impact of the h1-receptor antagonist cetirizine on the behavioral, cognitive, and psychomotor development of very young children with atopic dermatitis. *Pediatr Res* 2002;52:251-257.
151. Tacken M, Braspenning J, Spreeuwenberg P, van den Hoogen H, van essen G, de Bakker D, Grol R. Patient characteristics determine differences in the influenza vaccination rate more so than practice features. *Prev Med* 2002;35:401-406.
152. ten Berg JM, Kelder JC, Plokker TH, van Hout BA. Costs and effectiveness of using coumarins before, during and after coronary angioplasty. *Pharmacoeconomics* 2002;20:847-853.
153. Terreehorst I, Oosting AJ, Tempels-Pavlica Z, de Monchy JG, Bruijnzeel-Koomen CA, Hak E, van Wijk RG. Prevalence and severity of allergic rhinitis in house dust mite-allergic patients with bronchial asthma or atopic dermatitis. *Clin Exp Allergy* 2002;32:1160-1165.
154. Teunissen LL, Franssen H, Wokke JH, van der Graaf Y, Linssen WH, Banga JD, Laman DM, Notermans NC. Is cardiovascular disease a risk factor in the development of axonal polyneuropathy? *J Neurol Neurosurg Psychiatry* 2002;72:590-595.
155. Timonen KL, Schwartz J, Nielsen J, Brunekreef B. Associations between markers of respiratory morbidity in European children. *Eur Respir J* 2002;19:479-486.
156. Toet MC, van der Meij W, de Vries LS, Uiterwaal CS, van Huffelen KC. Comparison between simultaneously recorded amplitude integrated electroencephalogram (cerebral function monitor) and standard electroencephalogram in neonates. *Pediatrics* 2002;109:772-779.
157. Valk M, Moons KGM, Cools HJM, Schrijvers AJP. Classifying the probability of urinary incontinence in psychogeriatric nursing home patients. *Archives of Gerontology and Geriatrics* 2002;34:79-91
158. van Bel F, Valk L, Uiterwaal CS, Egberts J, Krediet TG. Plasma guanosine 3',5'-cyclic monophosphate and severity of peri/intraventricular haemorrhage in the preterm newborn. *Acta Paediatr* 2002;91:434-439.
159. van den Berg HM, Fischer K, van der Bom JG, Roosendaal G, Mauser-Bunschoten EP. Effects of prophylactic treatment regimens in children with severe haemophilia: a comparison of different strategies. *Haemophilia* 2002;8 Suppl 2:43-46.
160. van den Bosch MA, Mali WP, Bloemenkamp DG, Eikelboom BC, Kemmeren JM, Tanis BC, Algra A, Rosendaal FR, van der Graaf Y. Increased pregnancy loss in young women with aortoiliac disease. *Atherosclerosis* 2002;164:121-127.
161. van der Bom JG, Bots ML, Haverkate F, Kluft C, Grobbee DE. The 4G5G polymorphism in the gene for PAI-1 and the circadian oscillation of plasma PAI-1. *Blood* 2002;..
162. van der Feen C, Neijens FS, Kanters SD, Mali WP, Stolk RP, Banga JD. Angiographic distribution of lower extremity atherosclerosis in patients with and without diabetes. *Diabet Med* 2002;19:366-370.
163. van der Graaf Y, Molijn A, Doornwaard H, Quint W, van Doorn LJ, van den Tweel J. Human papillomavirus and the long-term risk of cervical neoplasia. *Am J Epidemiol* 2002;156:158-164.
164. van der Hel OL, van der Luijt RB, Bueno de Mesquita HB, Van Noord PA, Slothouber B, Roest M, van der Schouw YT, Grobbee DE, Pearson PL, Peeters PH. Quality and quantity of DNA isolated from frozen urine in population-based research. *Anal Biochem* 2002;304:206-211.
165. van der Meer I, de Maat MP, Bots ML, Breteler MM, Meijer J, Kiliaan AJ, Hofman A, Witteman JC. Inflammatory mediators and cell adhesion molecules as indicators of severity of atherosclerosis: the Rotterdam Study. *Arterioscler Thromb Vasc Biol* 2002;22:838-842.

166. van der Schaaf I, Brilstra EH, Buskens E, Rinkel GJ. Endovascular treatment of aneurysms in the cavernous sinus: a systematic review on balloon occlusion of the parent vessel and embolization with coils. *Stroke* 2002;33:313-318.
167. van der Schaaf I, Ruigrok YM, Rinkel GJ, Algra A, Van Gijn J. Study design and outcome measures in studies on aneurysmal subarachnoid hemorrhage. *Stroke* 2002;33:2043-2046.
168. van der Schouw YT, Pijpe A, Lebrun CE, Bots ML, Peeters PH, Van Staveren WA, Lamberts SW, Grobbee DE. Higher usual dietary intake of phytoestrogens is associated with lower aortic stiffness in postmenopausal women. *Arterioscler Thromb Vasc Biol* 2002;22:1316-1322.
169. van der Vaart CH, de Leeuw JR, Roovers JP, Heintz AP. The effect of urinary incontinence and overactive bladder symptoms on quality of life in young women. *BJU Int* 2002;90:544-549.
170. van der Vaart CH, van der Bom JG, de Leeuw JR, Roovers JP, Heintz AP. The contribution of hysterectomy to the occurrence of urge and stress urinary incontinence symptoms. *BJOG* 2002;109:149-154.
171. van der Veen J, Bakx C, van den Hoogen H, Verheijden M, van den Bosch W, van Weel C, van Staveren W. Stage-matched nutrition guidance for patients at elevated risk for cardiovascular disease: a randomized intervention study in family practice. *J Fam Pract* 2002;51:751-758.
172. Van Der Windt DA, van der Heijden GJ, Van Den Berg SG, Ter Riet G, De Winter AF, Bouter LM. Ultrasound therapy for acute ankle sprains. *Cochrane Database Syst Rev* 2002;CD001250.
173. van der Worp HB, Kappelle LJ, Algra A, Bar PR, Orgogozo JM, Ringelstein EB, Bath PM, Van Gijn J. The effect of tirilazad mesylate on infarct volume of patients with acute ischemic stroke. *Neurology* 2002;58:133-135.
174. van Dijk D, Jansen EW, Hijman R, Nierich AP, Diephuis JC, Moons KG, Lahpor JR, Borst C, Keizer AM, Nathoe HM, Grobbee DE, de Jaegere PP, Kalkman CJ. Cognitive outcome after off-pump and on-pump coronary artery bypass graft surgery: a randomized trial. *JAMA* 2002;287:1405-1412.
175. van Doorn HC, van der Zee AG, Peeters PH, Kroeks MV, van Eijkeren MA. Preoperative selection of patients with low-stage endometrial cancer at high risk of pelvic lymph node metastases. *Int J Gynecol Cancer* 2002;12:144-148.
176. van Duijn H, Kuyvenhoven M, Welschen I, den Ouden H, Slootweg A, Verheij T. Patients' and doctors' views on respiratory tract symptoms. *Scand J Prim Health Care* 2002;20:201-202.
177. van Duijnhoven FJ, van der Hel OL, van der Luijt RB, Bueno de Mesquita HB, Van Noord PA, Peeters PH. Quality of NAT2 genotyping with restriction fragment length polymorphism using DNA isolated from frozen urine. *Cancer Epidemiol Biomarkers Prev* 2002;11:771-776.
178. van Es RF, Jonker JJ, Verheugt FW, Deckers JW, Grobbee DE. Aspirin and coumadin after acute coronary syndromes (the ASPECT-2 study): a randomised controlled trial. *Lancet* 2002;360:109-113.
179. van Gils CH, Bostick RM, Stern MC, Taylor JA. Differences in base excision repair capacity may modulate the effect of dietary antioxidant intake on prostate cancer risk: an example of polymorphisms in the XRCC1 gene. *Cancer Epidemiol Biomarkers Prev* 2002;11:1279-1284.
180. van Gils CH, Conway K, Li Y, Taylor JA. HRAS1 variable number of tandem repeats polymorphism and risk of bladder cancer. *Int J Cancer* 2002;100:414-418.
181. van Hout HP, Vernooij-Dassen MJ, Hoefnagels WH, Kuin Y, Stalman WA, Moons KG, Grol RP. Dementia: predictors of diagnostic accuracy and the contribution of diagnostic recommendations. *J Fam Pract* 2002;51:693-699.
182. van Klei WA, Leyssius AT, Grobbee DE, Moons KG. Identifying patients for blood conservation strategies. *Br J Surg* 2002;89:1176-1182.
183. van Klei WA, Moons KG, Rheineck-Leyssius AT, Kalkman CJ, Rutten CL, Knappe JT, Grobbee DE. Validation of a clinical prediction rule to reduce preoperative type and screen procedures. *Br J Anaesth* 2002;89:221-225.
184. van Klei WA, Moons KG, Rutten CL, Schuurhuis A, Knappe JT, Kalkman CJ, Grobbee DE. The effect of outpatient preoperative evaluation of hospital inpatients on cancellation of surgery and length of hospital stay. *Anesth Analg* 2002;94:644-649.
185. van Koolwijk LM, Uiterwaal CS, van der Laag J, Hoekstra JH, Gulmans VA, van der Ent CK. Treatment of children with cystic fibrosis: central, local or both? *Acta Paediatr* 2002;91:972-977.
186. van Meijel B, van der Gaag M, Kahn RS, Grypdonck M. The practice of early recognition and early intervention to prevent psychotic relapse in patients with schizophrenia: an exploratory study. Part 2. *J Psychiatr Ment Health Nurs* 2002;9:357-363.
187. van Meijel B, van der Gaag M, Kahn RS, Grypdonck M. The practice of early recognition and early intervention to prevent psychotic relapse in patients with schizophrenia: an exploratory study. Part 1. *J Psychiatr Ment Health Nurs* 2002;9:347-355.
188. van Rossum EF, Koper JW, Huizenga NA, Uitterlinden AG, Janssen JA, Brinkmann AO, Grobbee DE, De Jong FH, van Duyn CM, Pols HA, Lamberts SW. A polymorphism in the glucocorticoid receptor gene,



- which decreases sensitivity to glucocorticoids in vivo, is associated with low insulin and cholesterol levels. *Diabetes* 2002;51:3128-3134.
189. Van Staveren WA, de Graaf C, de Groot LC. Regulation of appetite in frail persons. *Clin Geriatr Med* 2002;18:675-684.
  190. Van Strien RT, Koopman LP, Kerkhof M, Spithoven J, De Jongste JC, Gerritsen J, Neijens HJ, Aalberse RC, Smit HA, Brunekreef B. Mite and pet allergen levels in homes of children born to allergic and nonallergic parents: the PIAMA study. *Environ Health Perspect* 2002;110:A693-A698.
  191. Van Tiel E, Peeters PH, Smit HA, Nagelkerke NJ, Van Loon AJ, Grobbee DE, Bueno-De-Mesquita HB. Quitting smoking may restore hematological characteristics within five years. *Ann Epidemiol* 2002;12:378-388.
  192. van Venrooij FV, Stolk RP, Banga JD, Erkelens DW, Grobbee DE. Primary and secondary prevention in cardiovascular disease: an old-fashioned concept? *J Intern Med* 2002;251:301-306.
  193. van Venrooij FV, van de Ree MA, Bots ML, Stolk RP, Huisman MV, Banga JD. Aggressive lipid lowering does not improve endothelial function in type 2 diabetes: the Diabetes Atorvastatin Lipid Intervention (DALI) Study: a randomized, double-blind, placebo-controlled trial. *Diabetes Care* 2002;25:1211-1216.
  194. van't Riet H, den Hartog AP, Van Staveren WA. Non-home prepared foods: contribution to energy and nutrient intake of consumers living in two low-income areas in Nairobi. *Public Health Nutr* 2002;5:515-522.
  195. Veen N, Selten JP, Hoek HW, Feller W, van der Graaf Y, Kahn R. Use of illicit substances in a psychosis incidence cohort: a comparison among different ethnic groups in the Netherlands. *Acta Psychiatr Scand* 2002;105:440-443.
  196. Veltkamp SC, Kemmeren JM, van der Graaf Y, Edlinger M, van der Werken C. Prediction of serious complications in patients admitted to a surgical ward. *Br J Surg* 2002;89:94-102.
  197. Verkooijen HM, (Peeters PH member of the COBRA study group awg. Diagnostic accuracy of stereotactic large-core needle biopsy for nonpalpable breast disease: results of a multicenter prospective study with 95% surgical confirmation. *Int J Cancer* 2002;%20;99:853-859.
  198. Verkooijen HM, Buskens E, Peeters PH, Borel Rinkes I, de Koning HJ, van Vroonhoven TJ. Diagnosing non-palpable breast disease: short-term impact on quality of life of large-core needle biopsy versus open breast biopsy. *Surg Oncol* 2002;10:177-181.
  199. Vermeer SE, Algra A, Franke CL, Koudstaal PJ, Rinkel GJ. Long-term prognosis after recovery from primary intracerebral hemorrhage. *Neurology* 2002;59:205-209.
  200. Vermeulen PM, Kalkman CJ, Dirksen R, Knape JT, Moons KG, Borm GF. Predictive performance of a physiological model for enflurane closed-circuit anaesthesia: effects of continuous cardiac output measurements and age-related solubility data. *Br J Anaesth* 2002;88:38-45.
  201. Vliegenthart R, Geleijnse JM, Hofman A, Meijer WT, van Rooij FJ, Grobbee DE, Witteman JC. Alcohol consumption and risk of peripheral arterial disease: the Rotterdam study. *Am J Epidemiol* 2002;155:332-338.
  202. Wagner G, Claes H, Costa P, Cricelli C, De Boer J, Debruyne FM, Dean J, Dinsmore WW, Fitzpatrick JM, Ralph DJ, Hackett GI, Heaton JP, Hatzichristou DG, Mendive J, Meuleman EJ, Mirone V, Montorsi F, Raineri F, Schulman CC, Stief CG, Von Keitz AT, Wright PJ. A shared care approach to the management of erectile dysfunction in the community. *Int J Impot Res* 2002;14:189-194.
  203. Wammes BM, Blom CA, Koelen M, De Groot SD, Remijnse-Meester WT, Van Staveren WA. Implementation research for 'evidence-based' guideline development by dietitians: a pilot study to test an instrument. *J Hum Nutr Diet* 2002;15:243-254.
  204. Weert-Van Oene GH, Schippers GM, De Jong CA, Schrijvers GA. Motivation for treatment in substance-dependent patients. Psychometric evaluation of the TCU motivation for treatment scales. *Eur Addict Res* 2002;8:2-9.
  205. Wermer MJ, Rinkel GJ, van Rooij WJ, Witkamp TD, Ziedses Des Plantas BG, Algra A. Interobserver agreement in the assesment of lobar versus deep location of intracerebral haematomas on ct. *J Neuroradiol* 2002;29:271-274.
  206. Westaway MS, Rheeder P, van Zyl DG, Seager JR. Development and testing of a 25-item patient satisfaction scale for black South African diabetic outpatients. *Curationis* 2002;25:68-75.
  207. Wirfalt E, McTaggart A, Pala V, Gullberg B, Frasca G, Panico S, Bueno-De-Mesquita HB, Peeters PH, Engeset D, Skeie G, Chirlaque MD, Amiano P, Lundin E, Mulligan A, Spencer EA, Overvad K, Tjønneland A, Clavel-Chapelon F, Linseisen J, Nothlings U, Polychronopoulos E, Georga K, Charrondiere UR, Slimani N. Food sources of carbohydrates in a European cohort of adults. *Public Health Nutr* 2002;5:1197-1215.
  208. Wolters V, Vooijs-Moulaert AF, Burger H, Brooimans R, De Schryver J, Rijkers G, Houwen R. Human tissue transglutaminase enzyme linked immunosorbent assay outperforms both the guinea pig based tissue transglutaminase assay and anti-endomysium antibodies when screening for coeliac disease. *Eur J Pediatr* 2002;161:284-287.

209. Wouters-Wesseling W, Wouters AE, Kleijer CN, Bindels JG, De Groot CP, Van Staveren WA. Study of the effect of a liquid nutrition supplement on the nutritional status of psycho-geriatric nursing home patients. *Eur J Clin Nutr* 2002;56:245-251.
210. Zwart S, Sachs A. Appropriate antibiotic use for acute pharyngitis. *Ann Intern Med* 2002;136:632-633.

### International publications - other-

1. Algra A, for the European-Australian Stroke Prevention in Reversible Ischemia Trial Study Group. Warfarin or aspirin for recurrent ischemic stroke. (letter). *N Engl J Med* 2002;346:1169-1171.
2. Algra A. Adjustment in the anger-stroke relationship: How far should one go? *Stroke* 2002;33:19-20.
3. Bates CJ, Benton D, Biesalski HK, Staehelin HB, van Staveren WA, Stehle P, Suter PM, Wolfram G. Nutrition and aging: a consensus statement. *J Nutr Health & Aging* 2002;6(2):103-116.
4. Bonneux L. Comparative efficiency of national health systems. To improve health care system's performance, drink red wine. *BMJ* 2002;324:49.
5. Bonneux L. Mammographic screening: no reliable supporting evidence? *Lancet* 2002;360:720-721.
6. Bonneux L. Update on effects of screening mammography. *Lancet* 2002;360:337-338.
7. Brunekreef B, Hoek G. No association between major football games and cardiovascular mortality. *Epidemiology* 2002;13:491-492.
8. Brunekreef B. After the wall. *Epidemiology* 2002;13:376-378.
9. Brunekreef B. Particulate matter and lung function growth in children: a 3-yr follow-up study in Austrian schoolchildren. *Eur Respir J* 2002;20:1354-1355.
10. Charrondiere UR, Vignat J, Moller A, Ireland J, Becker W, Church S, Farran A, Holden J, Klemm C, Linardou A, Mueller D, Salvini S, Serra-Majem L, Skeie G, van Staveren WA, Unwin I, Westenbrink S, Slimani N, Riboli E. The European Nutrient Database (ENDB) for Nutritional Epidemiology. *J Food Comp and Analysis* 2002;15:435-451.
11. Elias SG, Van Noord PA, Peeters PH, Den Tonkelaar I, Grobbee DE. The 1944-1945 Dutch famine and age at natural menopause--the value and validity of individual exposure assessment. *IARC Sci Publ* 2002;156:311-313.
12. Keinan BL, Peeters PH, Mulligan AA, Navarro C, Slimani N. Consumption of soy products among European consumers of a health-conscious diet. *IARC Sci Publ* 2002;156:109-112.
13. Keinan BL, Peeters PH, Mulligan AA, Navarro C, Slimani N. Consumption of soy products in 10 European countries. *IARC Sci Publ* 2002;156:105-108.
14. Moons KG, Grobbee DE. Diagnostic studies as multivariable, prediction research. *J Epidemiol Community Health* 2002;56:337-338.
15. Moons KG, Harrell FE, Steyerberg EW. Should scoring rules be based on odds ratios or regression coefficients? *J Clin Epidemiol* 2002;55:1054-1055.
16. Moret NC, van Gils CH, Peeters PH. Age at menarche in relation to adult height in the EPIC cohort. *IARC Sci Publ* 2002;156:307-309.
17. Mosterd A, Hoes AW. Reducing hospitalizations for heart failure. *Eur Heart J* 2002;23:842-845.
18. Mosterd A, Reitsma JB, Grobbee DE. Angiotensin converting enzyme inhibition and hospitalisation rates for heart failure in the Netherlands, 1980 to 1999: the end of an epidemic? *Heart* 2002;87:75-76.
19. Peeters A, Barendregt J, Bonneux L. Why don't smokers show an increased mortality risk with overweight? *Obes Res* 2002;10:1092-1093.
20. Peeters PH, Keinan-Boker L, van der Schouw YT, Grobbee DE. Phytoestrogens and breast cancer risk: review of the epidemiological evidence. *IARC Sci Publ* 2002;156:331-336.
21. Schroll M, Schlettwein D, van Staveren WA, Schlienger JL. Health related quality of life and physical performance. SENECA 1999. *J Nutr Health & Aging* 2002;6(1):15-19.
22. Schuermans MJ, Donders ART, Shortridge-Baggett LM, Duursma SA. Delirium case finding: pilot testing of a new screening scale for nurses. *Journal of the American Geriatrics Society*, 2002;50(4).
23. Shortridge-Baggett LM. (2001). Self-Efficacy: Measurement and Intervention in Nursing. *Scholarly Inquiry for Nursing Practice*, 15(3), 183-188.
24. van den Bosch MA, Mali WP, Bloemenkamp DG, van der Graaf Y. Peripheral arterial disease. *Lancet* 2002;359:1070.
25. van der Bom JG, Kluft C. Activation of coagulation and fibrinolytic system and thrombotic tendency. *Lancet* 2002;360:801-802.
26. van der Bom JG. Does plasma fibrinogen increase thrombotic tendency? *Eur J Clin Invest* 2002;32:721-722.

27. Van Noord PA, Haars G, Peeters PH. Age at exposure to the Dutch famine of 1944-1945 has opposing effects on adult mammographic density (DY); a study in the DOM cohort. *IARC Sci Publ* 2002;156:541-542.
28. Van Noord PA. Does the sibling effect have its origin in utero? Investigating birth order, cord blood immunoglobulin E concentration, and allergic sensitization at age 4 years. *Am J Epidemiol* 2002;156:882-883.
29. Van Noord PA. Effects of maternal age at birth on breast cancer risk factors in daughters. A hypothesis on the role of oocyte, mitochondrial-related chromosomal instability. *IARC Sci Publ* 2002;156:315-317.
30. Van Noord PA. Fat distribution, menopausal age, and breast cancer risk: a shared preconceptional, maternal/oocyte-mediated link? *Genet Epidemiol* 2002;23:197-199.
31. van Staveren WA. The Third European Congress on Nutrition and Health in the Elderly People. Editorial. *J Nutr Health & Aging* 2002;6 (1):3-3.
32. van Staveren WA, de Graaf C, de Groot CPGM. Regulation of appetite in frail persons. *Clin Geriatr Med* 2002;18:675-684.

### National publications- journal articles

1. Bots ML, van der Bom JG, de Bruyne MC, Grobbee DE. [Cardiovascular risk factors. II. Signs of vascular damage: practical implications] Cardiovasculaire risicofactoren. II. Tekenen van vaatschade: praktische implicaties. *Ned Tijdschr Geneesk* 2002;146:1174-1178.
2. Bots ML, van der Bom JG. Preventie van hart- en vaatziekten anno 2002. *Tijdschr voor Huisartsgeneeskunde* 2002;19 (supl 1):1-4.
3. Brouha XD, Tromp DM, de Leeuw JR, Koole R, Slotweg PJ, Hordijk GJ. [Rising incidence of invasive (T4) head-neck carcinoma at the Utrecht University Medical Center, 1980-1998] Stijgende Incidentie van het T4 hppfd-halscarcinoom. *Ned Tijdschr Geneesk* 2002;146:1131-1135.
4. de Boer BJ. Diagnostiek van erectiele disfuncties. *Bijblijven* 2002;18(51):13-20.
5. De Graeff A, de Leeuw JRJ, Ros WJG, Hordijk GJ, Blijham GH, Winnubst JAM. Voorspelling van kwaliteit van leven en depressie na behandeling van kanker in het hoofd-halsgebied. *Gedrag & Gezondheid* 2002;30:178-191.
6. de Groot CPGM, van Staveren WA. Energy balance and malnutrition in institutionalized elderly people. *J Nutr Health & Aging* 2002;6(5):311-3.
7. de Wit NJ, Witteman BE. Diarree. *Huisarts en Wetenschap* 2002; 45(9): 478-82
8. Defloor T, Grypdonck MFH, Van den Bossche K, Feyaarts S, Derre B, Vanderwee K. Dossier Klinisch: De Belgische richtlijn voor decubitus. *Tijdschrift voor Verpleegkundigen* 2002;2:58-60.
9. Dijkstra K, Kuyvenhoven MM, Verheij TJM, Bruinse HW, Visser GHA. Is er standaardisatie bij de diagnose en behandeling van dreigende vroeggeboorte? Een enquête onder Nederlandse gynaecologen. *Ned Tijdschr voor Obstetrie & Gynaecologie* 2002;115: 128-35
10. Duijnste MSH. Dossier klinisch II: Een verstandelijk gehandicapt kind: Van peuter tot adolescent. *TvZ, Tijdschr voor Verpleegkundigen* 2002, 6(112), 56-59.
11. Duprez V, Grypdonck MFH. Dossier klinisch deel 1 Therapietrouw bij chronisch zieken die in armoede leven. *Tijdschrift voor Verpleegkundigen* 2002, 9(112), 62-65.
12. Geerlings M, Kalmijn S. Risicofactoren voor dementie en achteruitgang in cognitieve functies. *Neuropraxis* 2002;6:193-200.
13. Grobbee DE. [Possibilities and limitations of genetic research; an advisory report from the Advisory Council on Health Research] Mogelijkheden en beperkingen van genetisch onderzoek; een advies van de raad voor Gezondheidsonderzoek. *Ned Tijdschr Geneesk* 2002;146:1571-1573.
14. Grypdonck MF, Schoonhoven L. Themagedeelte: Evidence Based Practice (EBP): onderzoek, reviews, richtlijnen, protocollen en de praktijk. *Nationaal Verbond der Katholieke Vlaamse Verpleegkundigen* 2002:9-21.
15. Grypdonck MFH, Schuurmans MJ, Gamel CJ. Thuis in twee werelden, wetenschappelijk opgeleide Advanced Practice Nurses in de verpleegkundige praktijk. *TvZ, Tijdschr voor Verpleegkundigen* 2002;8(112): 20-25.
16. Grypdonck MFH. Outreachende zorg voor ouderen in achterstandsbuurten vermindert psychiatrische problemen maar verkleint niet de kans op gedwongen verhuizing. *MGV : maandblad geestelijke volksgezondheid* 2002;9:861-864.
17. Harman G, Lendemeijer B. Politieassistentie tijdens crisisinterventie, een kwalitatief onderzoek. *De Ark* 2002;11: 14-16.
18. Huitema MC, Oosterom M. Verpleegkundige follow-up van gynaecologische oncologiepatiënten.

- Oncologica, Tijdschr Oncologie Verpleegkunde* 2002;19(1):37-38
19. Immers HEM, Schuurmans MJ, van der Bijl JJ. Herkennen van acute verwardheid bij IC-patiënten. Een onderzoek naar de geschiktheid van de NEECHAM-verwardheidschaal. *Kritiek* 2002;5:3-12.
  20. Jongerden I, Grypdonck MFH, van Linge RH, de Graaf L. Gebruik van bronisolatie-protocollen door verpleegkundigen. *Tijdschrift voor hygiëne en infectiepreventie* 2002;21:123-126.
  21. Kaemingk M, Keeken P, van Linge RH. Implementatie van Neurorevalidatie. *Tijdschr voor Verpleegkundigen* 2002;112(12):56-59.
  22. Koek HL, Bots ML. Hart- en vaatziekten, cijfers en feiten. *Hart Bulletin* 2002;33:105-7.
  23. Koek HL, Bots ML. Hartinfarct, cijfers en feiten. *Hart Bulletin* 2002;33:81-4.
  24. Koek HL, Bots ML. Opnamen en verpleegduur in ziekenhuis wegens hart- en vaatziekten, cijfers en feiten. *Hart Bulletin* 2002;33:156-8.
  25. Lendemeijer HH. Dossier Klinisch, deel 2; Vrijheidsbeperking in de zorg. *TvZ Tijdschrift voor Verpleegkundigen* 2002;112(1):56-61.
  26. Lendemeijer HH. Vrijheidsbeperking in de zorg, Nieuwe richtlijn voor verantwoorde aanpak. *Nursing* 2002;12:28-31.
  27. Lendemeijer HH. Kritische blik op vrijheidsbeperking. *Nursing* 2002;12: 30.
  28. Maas AH, van der Graaf Y. [Postmenopauzal hormone-replacment therapy discredited, except in women shortly after menopause].Hormonale suppletie therapie in de postmenopauze in diskrediet, behalve voor gezonde vrouwen kort na de menopauze. *Ned Tijdschr Geneesk* 2002;146:2127-2130.
  29. Meiland R, Geerlings SE, Hoes AW, Hoepelman IM. [Asymptomatic bacteriuria; management choices in different patient groups]Asymptomatische bacteriurie; beleidskeuzen in verschillende patientengroepen. *Ned Tijdschr Geneesk* 2002;146:659-662.
  30. Numans ME. Infectieziekte-onderzoek Leidsche Rijn. Nieuwe mogelijkheden in een dynamisch populatie-onderzoek. *Infectieziekten Bulletin* 2002(13);10:383-5
  31. Opstelten W, Hak E, Verheij TJ, van essen G. Gecombineerde influenza- en pneumokokkenvaccinatie van ouderen in de huisartspraktijk: vaccinatiegraad en determinanten van non-compliance. *Ned Tijdschr Geneesk* 2002;146:850-854.
  32. Pieters HM, Carlier IVE, Consultvoering als klinische dans. *Huisarts Wet* 2002;45(9):475-477
  33. Pijnappel RM, Peeters PH, Borel Rinkes I, Peterse JL, Holland R, Mali WP. [Diagnostics in clinically occult, radiologically suspect breast lesions more often surgery than needle diagnostics with image monitoring]. *Ned Tijdschr Geneesk* 2001;145:691-694.
  34. Prakken J, Duijnste MSH. Dossier Klinisch I Een verstandelijk gehandicapt kind: De diagnose en dan? *Tijdschrift voor Verpleegkundigen* 2002;112(6):52-55.
  35. Prakken J, Duijnste MSH. Dossier klinisch II. Een verstandelijk gehandicapt kind: Van peuter tot adolescent. *Tijdschrift voor Verpleegkundigen* 2002;112(6):56-59.
  36. Prakken J, Duijnste MSH. Dossier klinisch III Een verstandelijk gehandicapt kind: Op eigen benen of voor altijd onder moeders vleugels? *Tijdschrift voor Verpleegkundigen* 2002;112(6):60-63.
  37. Ravelli, DP, Buwalda H, Engeland, H van, Schrijvers AJP. Structuur, verantwoordelijkheid en behandelaanbod van Regionale GGZ Centra: kleinschaligheid in werkelijkheid. *TSG*. 2002;80:7:448-454.
  38. Reenders K, Rutten GEHM. De behandeling van diabetes mellitus type 2. *Tijdschrift Huisartsgeneeskunde* 2002 (suppl) 5-8.
  39. Roelink HM, Pool A, Grypdonck MFH. Dialoog in de zorgrelatie: Kwalitatief onderzoek naar recht doen aan autonomie van mensen met een ernstige verstandelijke handicap. *Ned Tijdschr voor de zorg aan verstandelijk gehandicapten* 2002;28(3):170-186.
  40. Rovers MM, Sonke GS. De betekenis van P: toetsen of schatten? *Bijblijven* 2002; 18(6): 15-19.
  41. Ruigrok YM, Algra A. De Warfarin-Aspirin Recurrent Stroke Study (WARSS) *Hartbulletin* 2002;3:50.
  42. Rutten GEHM. Behandeling van obese diabetespatiënten. *Patient Care* april 2002;17-19.
  43. Rutten GEHM. Diabetes strikt behandelen is zinnig en noodzakelijk. *Huisarts Wet* 2002, 45(10):548-53
  44. Schols JM, Van Staveren WA. [The multidisciplinary guidelines on nutrition for patients indicated for nursing home care, 2001]De multidisciplinaire richtlijn verantwoorde vocht- en voedselvoorziening voor verpleeghuisgeïndiceerden, 2001. Een toelichting. *Tijdschr Gerontol Geriatr* 2002;33:166-174.
  45. van der Bom JG, Bots ML, Grobbee DE. [Cardiovascular risk factors. I. Review of possible causes of heart and vascular diseases] Cardiovasculaire risicofactoren. I. Overzicht van mogelijke oorzaken van hart- en vaatziekten. *Ned Tijdschr Geneesk* 2002;146:1169-1174.
  46. van der Graaf Y. [Population screening for uterine cervix cancer: the negative effects of insufficient knowledge as to what is normal and abnormal] Het bevolkingsonderzoek naar baarmoederhalskanker: de nadelige gevolgen van onvoldoende kennis over normaal en abnormaal. *Ned Tijdschr Geneesk* 2002;146:1569-1571.
  47. van Meijel B. Piet en de wetenschap. *Tijdschrift voor Verpleegkundigen* 2002;3:22-23.
  48. van Meijel B, Mauritz MW. Een belevingsgerichte benadering in de zorg voor de psychiatrische patient.

- Psychiatrie en verpleging: tijdschrift voor hulpverleners in de geestelijke gezondheidszorg* 2002;72-82.
49. van Meijel B. Buiten de orde. Keiharde wetenschap. *MGV, maandblad geestelijke volksgezondheid* 2002;11(57):1119-1121.
  50. van Meijel B. Gewelddadig gedrag in de forensische psychiatrie. Effecten van een preventieprogramma. *TvZ, Tijdschrift voor Verpleegkundigen* 2002;49.
  51. van Meijel B. Preventie in de psychiatrie: Symptoomherkenning en symptoommanagement bij schizofrenie. *Tijdschrift voor Ziekenverpleging* 2002;51.
  52. van Os-Medendorp H, Eland-de Kok P, van Sandwijk F, de Bruin-Weller M. Jeuk, een veel voorkomend verpleegprobleem. *Ned Tijdschr voor Dermatologie & Venereologie* 2002;12(2):109-112.
  53. van Staaij BK, van den Akker EH, Poels PJ, Hoes AW, Schilder AG. [Adenotonsillectomy in children: not yet scientifically validated] Adenotonsillectomie bij kinderen: nog onvoldoende wetenschappelijk onderbouwd. *Ned Tijdschr Geneesk* 2002;146:8-12.
  54. Verheijden MW, Bakx JC, van der Veen JE, van den Hoogen HJM, van Weel C, van Staveren WA. Voedingsvoorzichting op maat in de huisartspraktijk. *Hart Bulletin* 2002;33(6):147-150.
  55. Verheijden MW, Koelen MA, van der Veen JE, van Staveren WA. Het Stages of Change-model. Een theoretisch model in de praktijk getoetst. *Ned Tijdschr Diëtisten* 2002;57:263-268.
  56. Vermeulen J, Grypdonck MFH. Ervaringen van partners van vrouwen opgenomen met preterme contracties. *Nationaal Verbond der Katholieke Vlaamse Verpleegkundigen* 2002;8:184-190.
  57. Wijkstra J, Algra A, Nolen WA. Vervolgbehandeling met elektroconvulsiotherapie ter preventie van een recidiefdepressie. *Tijdschr Psychiatr* 2002;44:7-18.

### National publications- other

1. Algra A, Rinkel GJ. [A new instrument to measure clinical outcomes (Comment)] Een nieuw instrument om klinische uitkomsten te meten (Commentaar). *Ned Tijdschr Geneesk* 2002;146:604-605.
2. de Weert-Van Oene GH, de Jong CAJ: *Gemeten met twee maten: patiëntensatisfactie onderzoek in Novadic*. (By two standards: patients satisfaction research in Novadic). Julius Centrum UMC Utrecht, NISPA Katholieke Universiteit Nijmegen; september 2002, Rapport.
3. de Wit NJ. Een blijde gebeurtenis met een vervelend staartje; hepatitis A bij een gezin na kortstondig bezoek aan India. *Infectieziekten Bull* 2002;13 ( 01): 20-1.
4. Defloor T, Grypdonck MFH, van den Bossche K, Feysaerts S, Derre B, Vanderwee K. De Belgische Richtlijnen voor Decubitus. *Ligament : verpleegkundig informatief tijdschrift*, 2002;3(33), 18-22.
5. Numans ME. Gezondheid, een zorg voor de dokter? In: Venderbosch M (Ed.), *Leidsche Rijn Monitor 2002*, naar realistische ambities. Utrecht, 2002.
6. Schols JMGA, van Staveren WA. De multidisciplinaire richtlijn verantwoorde vocht- en voedselvoorziening voor verpleeghuisgeïndiceerden, 2001 Een toelichting. *Tijdschr Gerontol Geriatr* 2002;33:166-74.
7. Schrijvers AJP, Meiss-De Haas CL, Donders R. *Trapezewerkers en hun vangnet*. Een onderzoek naar de arbeidssatisfactie van centralisten ambulancezorg. UMC Utrecht, Julius Centrum voor Gezondheidswetenschappen en Eerstelijns Geneeskunde; april 2002, Rapport.
8. Vallenga D, Lendemeijer B, Tan IY, Grypdonck MFH, Boon P. Risk evaluation in epilepsy and mental retardation. In -- (Ed.), *Epilepsia*, 2002.
9. van der Arend M, van der Linden BA. Project Ontslagproces binnen de DIGD. Wenselijkheid en haalbaarheid van het oprichten van een transferbureau en Schakelafdeling voor de DIGD. Julius Centrum voor Gezondheidswetenschappen en Eerstelijns Geneeskunde; mei 2002, Rapport.
10. van der Linden BA, Huysman R, Zijlstra TR. The Proof of the Pudding. Een aanzet tot discussie over het gebruik van indicatoren voor Transmurale Zorg. In opdracht van ZON MW; juli 2002, Rapport.
11. van der Linden BA, Schrijvers AJP. *Indicatiestelling in het ziekenhuis. Beschrijving en vergelijking van RIO-Ziekenhuis transferpunten UMC Utrecht*. Julius Centrum voor Gezondheidswetenschappen en Eerstelijns geneeskunde. In opdracht van het Ministerie van NSS; oktober 2002, Rapport.
12. Van Leest LATM, Koek HL, Bots ML, Verschuren WMM. Hart- en vaatziekten in Nederland 2002, cijfers over ziekte en sterfte: *Nederlandse Hartstichting*, Den Haag, 2002.

## Books

1. Lenz ER, Shortridge-Baggett LM (Ed.). *Self-Efficacy in Nursing*. New York: Springer Publishing Company, 2002.
2. Schrijvers AJP, Oudendijk N, de Vries P, Hageman M (Ed.). *Moderne Patiëntenzorg in Nederland. Van Kennis naar Actie*. Elsevier Gezondheidszorg, Maarssen, 2002.
3. van Rooij E, Kodner LD, Rijsemus, T, Schrijvers AJP (Ed.). *Health and Healthcare in the Netherlands*. Elsevier Gezondheidszorg, Maarssen, 2002.

## Chapters in books

1. Bots ML, van der Schouw YT, Grobbee DE. Postmenopausal hormone replacement therapy and carotid intima-media thickness. In: Touboul PJ, Hennerici M (Ed.). *Intima-media thickness, drugs and stroke*. Imprimerie Clerc, Saint-Amand-Montrond, 2002. (ISBN 2-9515234-4-0).
2. Dagnelie CF. Verkoudheid bij jonge kinderen / coryza in: Eekhof et al. *Kleine Kwalen*, Elsevier. Maarsen 2002.
3. de Groot CPGM, van Binsbergen JJ, van Staveren WA. Betekent “gewoon” eten voor ouderen een inadequate voorziening van micronutriënten?” In: *Ontwikkelingen in de geriatrie*, Boerhaave Commissie voor Postacademisch Onderwijs in de Geneeskunde, LUMC, 2002, 181-193.
4. de Leeuw JRI. Psychosocial evaluation in Head and Neck Oncology. In -- (Ed.), *Trends and figures in rehabilitation for Head and Neck Oncology patients*. Groningen, 2002.
5. de Wit NJ, Witteman BE. Bovenbuikklachten. Bunge, In serie *Practicum voor de Huisarts*. Maarssen 2002.
6. de Wit NJ, Witteman BE. Diarree. In T.O.H. de Jongh et al. (Ed.), *Diagnostiek van alledaagse klachten*. Bohn Stafleu van Loghum. Houten 2002. ISBN 9031337395.
7. Duijnste MSH, van den Dungen A, Cuijpers P, Maliepaard R. The role, the burden and the support of informal care. In Schrijvers AJP (Ed.), *Health and health care in the Netherlands. A critical self-assessment by Dutch experts in the medical and health sciences*. (pp. 51-63). Utrecht: De Tijdstroom, 2002.
8. Grobbee DE, Hoes AW, Verheij TJM, Schrijvers AJ, van Ameijden E, Numans ME. Het Leidsche Rijn Gezondheidsproject: zorgvernieuwing toetsen met dagelijks verzamelde gegevens. In: Schrijvers AJ, Oudendijk N, de Vries P, Hageman M (Ed.) *Moderne Patiëntenzorg in Nederland*. Elsevier Gezondheidszorg, Maarssen 2002.
9. Grypdonck MFH, Gamel CJ, van Meijel B, van Swieten-Duyfjes E, Verhaeghe S, Pollet J. The Contribution of Qualitative Research To The Development And Testing Of Nursing Intervention. In -- (Ed.), *Research Conducted By The IQM Netherlands International Site*, 2002.
10. Kalmijn S. Chapter 3. Dietary fatty acids and cognitive function. In: Mattson MP (Ed.) *Diet-brain connections. Impact on memory, mood, aging and disease*. Kluwer Academic Publishers, Massachusetts, USA, 2002.
11. Kappen MJ, van der Bijl JJ, Vaccaro-Olko. Self-efficacy in children with diabetes mellitus: Testing of an measurement instrument. In Lenz ER, Shortridge-Baggett LM (Ed.). *Self-Efficacy in Nursing*. (pp. 31-43). New York: Springer Publishing Company, 2002.
12. Koopman-van den Berg DJEM, van der Bijl JJ. The use of self-efficacy enhancing methods in diabetes education in the Netherlands. In Lenz ER, Shortridge-Baggett LM (Ed.). *Self-Efficacy in Nursing*. (pp. 43-52). New York: Springer Publishing Company, 2002.
13. Moens A, Grypdonck MHF, van der Bijl JJ. The development and psychometric testing of an instrument to measure diabetes management self-efficacy in adolescents with type 1 diabetes. In Lenz ER, Shortridge-Baggett LM (Ed.). *Self-Efficacy in Nursing*. (pp. 43-52). New York: Springer Publishing Company, 2002.
14. Oude Lansink A, van Linge RH. Invloed van leiderschap op innovatief gedrag: onderzoek naar effecten van waargenomen leiding op het innovatieve gedrag van verplegenden. In -- (Ed.), *Handboek Zorgvernieuwing*, 2002.
15. Peeters PHM, Keinan-Boker L, Van der Schouw YT, Grobbee DE. Phytoestrogens and breast cancer: epidemiological studies. In: Riboli E, Lambert R (Ed.). *Nutrition and lifestyle, opportunities for cancer prevention*. Lyon, International Agency for Research on Cancer, 2002:331-6
16. Roest M, Van der Schouw YT, Marx JJM. Hereditary hemochromatosis: a risk factor for cardiovascular disease. In: Braunwald E (Ed.). *Harrison's Advances in Cardiology*. New York, McGraw Hill, 2002:623-8.
17. Rutten GEHM, Elte JWF. Diabetes mellitus in de huisartspraktijk; in serie *Practicum huisartsgeneeskunde*. Maarssen 2002: Elsevier gezondheidszorg.

18. Rutten GEHM. Diabetes mellitus. In: *Samenwerkende Artsenlaboratoria in Nederland. Diagnostisch Handboek 2002 voor de eerste lijn*. 4e ed. SAN 2002; p.45-52.
19. Sachs APE, Verheij TJM. Hoesten. in: *Diagnostiek van alledaagse klachten*. Bohn Stafleu van Loghum, Houten 2002.
20. Schnepp W, Duijnstee MSH, Grypdonck MFH. Ergründung der Funktion und Gestaltung von Pflege im familiären Kontext Russlanddeutscher Spätaussiedler: ein Rückblick auf den Forschungsprozess. In D.Schaeffer, (Ed.), *Qualitative Gesundheits-und Pflegeforschungsprozess*. (pp. 87-102). Bern: Verlag Hans Huber, 2002.
21. Schrijvers AJP. Verleden, heden en toekomst van regionale indicatieorganen. In: *Handboek voor Ouderenzorg*, Elsevier Gezondheidszorg, Maarssen. 2002;52/115:IV 3.9-1-26.
22. Schuurmans MJ, Milisen K. Verpleegkundig management van delirium bij ouderen. In Milisen K, De Maesschalck L, Abraham I. (Ed.), *Verpleegkundige zorgaspecten bij ouderen*. (pp. 173-200). Elsevier Gezondheidszorg, Maarssen 2002.
23. Shortridge-Baggett LM. Self-efficacy: Measurement and interventions in nursing. In Lenz ER, Shortridge-Baggett LM (Ed.). *Self-Efficacy in Nursing*. (pp. 9-27). New York: Springer Publishing Company, 2002.
24. van der Bijl JJ, Shortridge-Baggett LM. The theory and measurement of the self-efficacy construct. In Lenz ER, Shortridge-Baggett LM (Ed.). *Self-Efficacy in Nursing* (pp. 9-27). New York: Springer Publishing Company, 2002.
25. van der Graaf Y, Visseren FLJ. Multidisciplinaire zorg aan patiënten met vaatziekten: meer samenhang, meer preventie en voor de patiënt meer kwaliteit. In: Schrijvers G, Oudendijk N, de Vries P, Hageman M (Ed.) *Moderne patientenzorg in Nederland. Van kennis naar actie*. Elsevier Gezondheidszorg, Maarssen 2002.
26. van de Laar K, van der Bijl JJ. Strategies enhancing self-efficacy in diabetes education. In Lenz ER, Shortridge-Baggett LM (Ed.). *Self-Efficacy in Nursing* (pp. 63-76). New York: Springer Publishing Company, 2002.
27. van der Linden BA, Rosendal H. The birth of transmural care in the 1990's. In: Van Rooij et al. (Ed.) *Health and Healthcare in the Netherlands*. Elsevier Gezondheidszorg, Maarssen, 2002.
28. Van der Schouw YT. Does menopause increase the incidence of coronary heart disease? In: Lobo RA, Crosignani PG, Paoletti R, Bruschi F† (Ed.). *Women's Health and Menopause. New Strategies-Improved Quality of Life* (pp 117-122). Dordrecht, Kluwer Academic Publishers, 2002.
29. van Linge RH. Het Neuman Systems Model: Implementatiestrategieën. In de Kuyper (Ed.), *Verpleegkunde volgens het Neuman Systems Model*. Koninklijke Van Gorcum, Assen 2002.
30. van Meijel B, Grypdonck MFH, Kahn RS, van der Gaag M. The Development Of A Nursing Intervention Protocol For Relapse Prevention In Patients With Schizophrenia: The Contribution of Qualitative Research. In -- (Ed.), *Interventions Qualitative Health Research*.2002
31. van Staveren WA , de Groot CPGM. Vitamin D, nutritional significance. In: *Encyclopedia of Dairy Sciences*. Academic Press London UK 2002; 2664-70.
32. Weijman I, Ros WJG, Rutten GEHM, Schaufeli WB, Schabracq MJ, Winnubst JAM. Fatigue in employees with diabetes: Problem definition and the relationship with disease-and work-related factors. In -- (Ed.), *The role of work-and diabetes-related factors in explaining fatigue in employees with diabetes*. Lisbon /Portugal, 2002.
33. Zwart S, Dagnelie CF. Keelpijn. in: *Diagnostiek van alledaagse klachten*. Bohn Stafleu van Loghum, Houten 2002.